

1984-2012
XJ - KJ - ZJ - WJ - SJ - WK

CHEROKEE SERIES

PERFORMANCE PARTS - ACCESSORIES - REPLACEMENT PARTS



OWN A JEEP?

The toughest four letter word on wheels. Are you looking for a parts source rugged enough to match your off the beaten path sense of adventure? With more than 15,000 unique part numbers from brands like Omix-ADA®, Rugged Ridge®, Alloy USA®, Outland Automotive®, ORV™ Suspension and Precision Gear®, consider this your trail guide to the 4x4 of your dreams. A go anywhere, anytime, in any weather vehicle. Go ahead and smile, because it's going to take a lot of courage not to be cocky when you own a Jeep® like that.



WHO WE ARE

Omix-ADA, Inc.® is more than just a parts manufacturer, we're a community of enthusiasts dedicated to producing the finest in off road solutions. Our products have been propelling four-wheel drive vehicles down highways, back roads and over the world's roughest terrain for over a decade. Omix-ADA's® team of engineers have developed, tested and trail ridden thousands of new products until they were perfected for you.

AWARD WINNING DESIGNS

More than 2,500 new products are displayed at the SEMA Show every year. Groups of journalists and industry experts are charged with the task of judging the most innovative new products introduced into the automotive industry. Omix-ADA® emerged as one of the most decorated companies in the off road sector, and has won numerous awards over the years. The legacy still continues.

LICENSED PARTS

Why have we put so much time and energy into developing the most expansive collection of Jeep® parts available under one roof? Because the items bearing our logo are more than just parts, they are built with a legacy and heritage in mind. This is why we have been authorized to use the "MOPAR Authentic Restoration" and "MOPAR Official Licensed Product" logos for the more than 30 licensed parts we produce. We take pride in being one of the few manufacturers strong enough to stand behind the legendary Jeep® name.

THE OMIX-ADA® BRANDS



OMIX-ADA, Inc.

Omix-ADA, Inc.®
omix-ada.com

The parent company brand that offers thousands of parts and components for all Jeep® vehicles built from 1941 to current!



Rugged Ridge®
ruggedridge.com

Featuring the most complete line of high quality and functional accessories for your Jeep® vehicle.



Alloy USA®
alloyusa.com

A full line of the highest quality, high performance off road and racing alloy axles, and ring & pinions.



Outland®
outlandautomotive.com

Offering a full line of truck/SUV tube steps, bull bars, consoles and other functional accessories.



ORV™ Suspension
ruggedridge.com

ORV™ offers a full line of heavy duty suspension options to upgrade your vehicles off road capabilities.



Precision Gear®
precisiongear.com

Featuring a full line of heavy duty upgraded ring and pinion sets to make your vehicle run as efficiently as possible.

WARRANTIES

We offer a minimum 3 Year Limited Warranty on all of our products. We've got you covered!



find us on facebook
facebook.com/ruggedridge





INTERIOR

FLOOR LINERS	X6
INTERIOR STORAGE/ ORGANIZERS	X5
INTERIOR ACCESSORIES	X7
SEATS & SEAT COVERS	X4-X5

PERFORMANCE

AIR INTAKE KITS	X16
EXHAUST HEADERS	X16
THROTTLE BODY SPACER	X16

EXTERIOR

BULL BARS	X2
BUMPER SYSTEMS	X2
EXTERIOR ENHANCEMENTS	X8
FLARES & FENDERS	X3
HEAVY DUTY ACCESSORIES	X14
OFF ROAD LIGHTING	X12-X13
SKID PLATES	X14
TOWING	X15
TUBE STEPS	X2
WHEELS	X3
WINCHES & RECOVERY GEAR	X9-X11

SUSPENSION

BRAKE HOSES	X21
POLYURETHANE	X21
SUSPENSION KITS	X20
SHOCKS & STABILIZERS	X19

AXLE

DIFFERENTIAL COVERS	X26
FRONT AXLE KITS	X24
HUB CONVERSION KITS	X24
LOCKERS	X27
REAR AXLE KITS	X25
RING & PINIONS	X28
WHEEL SPACERS & ADAPTERS	X3, X26

Cherokee 84-12

FRONT TUBE BUMPER

All Rugged Ridge® Front and Rear Bumpers feature smooth ground welds for an unbelievable look and further rust protection. No other tubular bumper manufacturer goes to the expense of smooth grinding their welds. This exclusive smooth grind process virtually eliminates small weld “pockets” that never seem to get full paint coverage and tend to rust over time. Finally, all Rugged Ridge® Bumpers feature welded end caps rather than plastic end caps. Gone are the days of constantly replacing those lost tube bumper end caps after a long day on the trail.



11560.80

Front Bumpers

		Part#
84-96 Cherokee XJ	Front Bumper w/Riser	11560.80
For All Tube Bumpers	License Plate Mounting Bracket	11503.80
For All Tube Bumpers	Light Mounting Bracket	11503.81
For All Tube Bumpers	CB Antenna Mounting Bracket	11503.88



11503.88 CB Antenna Mounting Bracket



11503.81 Light Bracket



11503.80 License Plate Mounting Bracket

Cherokee 84-12

REAR TUBE BUMPER

Get the off-road look with a Rugged Ridge® Tube Bumper! Each bumper has smooth ground welds, welded end caps (not plastic end caps!) and the unique style only available from Rugged Ridge®.



Welded end caps, not plastic!

Rear Tube Bumpers

	Black
84-96 Cherokee, Black, Each	11570.80

SIDE TUBE STEPS

Whether you want to dress it up flashy or keep it subtle, Rugged Ridge® has a tube step style just for you. Why settle for only one tube style when Rugged Ridge® offers so much more?



11590.81

3" Side Tube Steps

	Black	Stainless
84-01 Cherokee 3" Round, 4-Door* Pair	11590.81	-
99-04 Grand Cherokee 3" Round Pair	-	81593.32
05-10 Grand Cherokee 3" Round Pair	-	81593.33
11-12 Grand Cherokee 3" Round Pair	-	81593.39

* Can be used for 2-Door XJ's but has two step pads per side.

BULL BARS

Year/Model

	Stainless
05-07 Grand Cherokee 3" Bar	82501.25
08-10 Grand Cherokee 3" Bar	82501.26
11-12 Grand Cherokee 2.5" Bar	82501.30



82501.25



Rugged Ridge® provides the most comprehensive replacement Fender Flare program on the market today. Rugged Ridge® has you covered when it is time to replace or upgrade your Factory Fender Flares. Each Flare is constructed of virtually indestructible, durable, UV treated thermoplastic to provide years of service. Each replacement flare is designed to fit into your factory mounting holes [some models may require some hole relocation] for ease of installation.

REPLACEMENT FENDER FLARE KITS

11605.01
Replacement Fender
Flare Kit, 84-96 Cherokee XJ

Fender Flare Kit
84-96 Cherokee [XJ]
4-pc kit w/out hardware

Part #
11605.01

ALL TERRAIN FENDER FLARE KITS

Get that aggressive off road look with the NEW Rugged Ridge® All Terrain Fender Flare! These 6" flares feature a stylish design while protecting your vehicles paint from flying rocks and mud. Constructed of durable UV treated ABS with a slight texture, these paintable flares provide a great look while being able to handle whatever nature throws at them. Each All Terrain Flare is designed to allow larger wheels and tires to fit in the wheel wells [some drilling and cutting maybe required]. Durable rust proof stainless fasteners included with each kit. Backed by an industry leading 3 year limited warranty, these NEW All Terrain Flares will really set you apart from the crowd!

Off Road Flare Kits

	Part #
All Terrain Fender Flare Kit, 84-01 4-Door Cherokee* NEW	11634.10
All Terrain Fender Flare Kit, 93-98 Grand Cherokee NEW	11635.10

*97-01 Cherokee models required modifying OE rear bumper cover.

STEEL D-WINDOW WHEELS

Legendary looks, brutally epic strength. Each Rugged Ridge® steel wheel is stamped from heavy gauge steel and powder coated with a durable black finish. Our wheels have been engineered, tested and certified to meet and exceed the strenuous SAE J2530 standards for wheel strength and durability. Turning a million cycles at double their load capacity to ensure they could hold up to abuses of off road use. Because a Jeep® isn't a Jeep® until its lifted and outfitted with oversized tires. Includes center cap.



Description

Description	Part #
Steel wheel D-Window, Black, 15X8, 5 on 4.5 bolt pattern, 3.75 backspacing, Cherokee [XJ] 84-01, Grand Cherokee [ZJ] 93-98	15500.01
Steel wheel D-Window, Black, 15X10, 5 on 4.5 bolt pattern, 3.75 backspacing, Cherokee [XJ] 84-01, Grand Cherokee [ZJ] 93-98	15500.02



15201.02
Wheel Spacer,
5 on 4.5" Bolt
Pattern

RUGGED RIDGE® WHEEL SPACERS

These hub centric spacers / adapters move your wheels out to help fit wider tires and give your vehicle a wider track and improve stability. Constructed of double anodized black extra thick 6061T6 aluminum for long life and extra corrosion resistance. All hardware is grade-8 for extra strength. Each part number comes as a spacer pair. Included are 10 pre-installed grade-8 wheel studs, 10 lug nuts and thread locker.

Wheel Spacer Kit	Width	Bolt Pattern	Part #
84-01 Cherokee, Grand Cherokee 93-98, Pair	1.25"	5 on 4.5"	15201.02
84-01 Cherokee, Grand Cherokee 93-98, Pair	1.5"	5 on 4.5"	15201.08
Wheel Adapter Kit	Width	Conversion	Part #
84-01 Cherokee, Grand Cherokee 93-98, Pair	1.25"	5 on 5" to 5 on 4.5"	15201.04

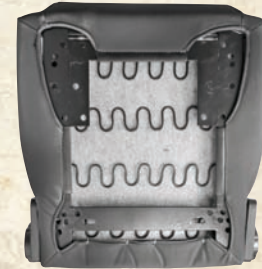
CAUTION!

CAUTION: Rugged Ridge® recommends use of wheel spacers with all suspension lifts to reduce risk of roll over or other accident associated with modifying ride height for increased off road capabilities. See additional product safety information and WARNINGS at back of catalog.



FEATURES & BENEFITS OF THE NEW XHD SEAT DESIGN

- Bolt-in solution for 84-01 XJ Cherokees! The first bolt-in solution—No adapters necessary!
- Durable powder coat painted welded interior frame to prevent interior seat rust and provide lasting comfort.
- Special patent pending seat base design that allows for easy installation in all 84-01 XJ Cherokees without any adaptor brackets! Saves you money, provides extra strength and provides true ease of installation!
- Each XHD Seat is designed to allow full functionality on 84-01 XJ Cherokees. The unique design incorporates the factory front slider feature along with a built-in reclining mechanism for driver comfort. Only XHD Seating from Rugged Ridge® gives you these options for XJ Cherokees!
- Heavy Duty seat base incorporates a CAD designed girder system which provides twice the strength of any other replacement seat on the market today. This design is the most advanced seat base ever created in the last 30 years!
- Dense foam pack and heavy duty raised spring design creates a more comfortable seating experience. This "comfort design" has been created to ensure seat longevity and comfort all in one package.
- Four heat treated grade eight 7/16" side bolts attach the seat base to the seat back. This increased bolt size (most seats use 8 MM bolts) strengthens the seat back and meets DOT standards in 84-01 XJ Cherokees.
- Tough automotive grade vinyl or woven fabric [XHD Off-Road Seat] and matching stitch patterns provide a great look in your Jeep® and tough "off road rated" performance.
- All lower seating areas have an expanded bolster area providing a wider seating space and more comfort. Wider bolsters also provide easier access/exit while entering and leaving the vehicle.
- A low profile seating surface along with not having to use adaptor brackets provides less steering wheel interference and more comfort. These seats have been specially designed for the true Jeep® enthusiast!
- Infinitely adjustable reclining mechanism lets you customize the seat recline position for the ultimate in comfort.
- Each seat offers an industry leading 3 year limited warranty.



XHD ULTRA SEAT

- Our full featured seat design with a removable and adjustable head rest.
- Expanded top and bottom side bolsters cradle the driver in comfort.
- Stylish racing design up-grades the look of any Jeep® interior.
- Constructed of durable automotive grade textured vinyl and available in four factory matching colors: Non-textured Black, Gray, Black Denim, Spice.
- Infinite recline mechanism.

XHD RECLINING SEAT

- Low cost seat replacement option. Style matches the original Jeep® look with horizontal stitching and infinite recline mechanism.
- Great entry level price point for 84-01 XJ Cherokees.
- Constructed of durable automotive grade textured vinyl and available in three factory matching colors: Gray, Black Denim, Spice.

XHD Ultra Seat	Part #
84-01 Cherokees, Front Seat, XHD Ultra Seat with Recliner, Black NEW	13446.01
84-01 Cherokees, Front Seat, XHD Ultra Seat with Recliner, Gray NEW	13446.09
84-01 Cherokees, Front Seat, XHD Ultra Seat with Recliner, Black Denim NEW	13446.15
84-01 Cherokees, Front Seat, XHD Ultra Seat with Recliner, Spice NEW	13446.37

XHD Replacement Seat	Part #
84-01 Cherokees, Front Seat, XHD Reclining, Gray NEW	13445.09
84-01 Cherokees, Front Seat, XHD Reclining, Black Denim NEW	13445.15
84-01 Cherokees, Front Seat, XHD Reclining, Spice NEW	13445.37



13448.53
XHD Off Road Seat



13446.15
XHD Ultra Seat



13447.37
XHD Sierra Seat



13445.09
XHD Replacement Seat



XHD OFF ROAD SEAT

- A true off road design, this fabric and vinyl seat offers true performance while providing the comfort of our other XHD designs.
- Each off-road seat has a built in adjustable lumbar support that adjusts quickly and easily.
- Each seat has three seat belt harness cutouts for use with a multi-point racing seat belt harness.
- Constructed of durable automotive grade woven fabric with vinyl trim for long life and cool comfort in the summer.
- XHD Off-Road Seats are available in three, two color/fabric styles to complement your interior; Black with gray insert, black with red insert and black with black insert.
- Infinite recline mechanism.

XHD Off Road Seat	Part #
84-01 Cherokees, Front Seat, XHD Off Road Seat, Black with Gray Insert NEW	13448.09
84-01 Cherokees, Front Seat, XHD Off Road Seat, Black with Black Insert NEW	13448.15
84-01 Cherokees, Front Seat, XHD Off Road Seat, Black with Red Insert NEW	13448.53

XHD SIERRA SEAT

- A sport racing design, this seat features a special seat belt harness cutout with a integrated head rest.
- Expanded top and bottom side bolsters cradle the driver in comfort.
- Constructed of durable automotive grade textured vinyl and available in three factory matching colors: Gray, Black Denim, Spice.
- Infinite recline mechanism.

XHD Sierra Seat	Part #
84-01 Cherokees, Front Seat, XHD Sierra Seat with Recliner, Gray NEW	13447.09
84-01 Cherokees, Front Seat, XHD Sierra Seat with Recliner, Black Denim NEW	13447.15
84-01 Cherokees, Front Seat, XHD Sierra Seat with Recliner, Spice NEW	13447.37



SEAT PROTECTORS

Available in Durable Neoprene or Tough UV Treated Poly Cotton



Protect your seats from the elements with these easy to install Seat Protectors. Constructed of durable UV treated poly cotton fabric or soft water resistant neoprene to ensure comfort and protection. Each Seat Protector incorporates extra storage on the rear of the cover plus a removable drink holder. Easy to install, these covers fit over all bucket Jeep® seats including all Rugged Ridge® replacement seats. Sold in pairs to cover your entire front seating area.

Seat Protector

- All Jeeps® Black Fabric, Pair
- All Jeeps® Gray Fabric, Pair
- All Jeeps® Spice Fabric, Pair
- All Jeeps® Black/Gray Neoprene, Pair

Part #

- 13235.01
- 13235.09
- 13235.37
- 13235.19

TRAIL BAGS

Rugged Ridge® has the answer for your onboard storage needs. These soft-side storage bags feature heavy canvas construction and oversized zippers. Great for carrying recovery gear, spare parts, camping gear, clothes, or any other necessity for a wheeling trip. Rugged nylon straps keep the bags in place during even the most insane wheeling. Make the most out of your roll cage with a full complement of Rugged Ridge® storage bags. These bags are easy to install and take off and work with both hard tops and soft tops.



13551.25 Seat Back Trail Bag

Trail Bags

Part #

- | | |
|---------------------------------|----------|
| Seat Back Trail Bag, Detachable | 13551.25 |
| Seat Back Trail Bag | 13551.26 |

SUV/JEEP® STORAGE BAG

Custom designed to provide removable storage for Jeep® vehicles. Special size fits behind rear seat to organize and store your cargo. Constructed of durable vinyl with a zipper top and removable cargo dividers - easy to use shoulder strap included.



Seat Protector

Part #

- | | |
|--|----------|
| Jeep®/SUV Storage Bag, Universal all Jeep® | 13551.01 |
|--|----------|

OFF-ROAD ORGANIZER

Custom design for use in Jeep® glove boxes. Special pockets allow you to effectively organize owners manuals, maps, tire gauges, vehicle registration and more. Constructed of durable nylon in a tri-fold configuration.



Off-Road Organizer

Part #

- | | |
|--------------------------------|----------|
| All Jeep® Glove Boxes/Consoles | 13305.06 |
|--------------------------------|----------|

TOTAL PROTECTION FOR YOUR JEEP®!

Rugged Ridge® All Terrain Floor Liners offer complete interior floor protection for your Truck, SUV or Jeep®. Now you can be assured when Rugged Ridge® All Terrain Floor Liners are installed, your investment is protected for the life of your vehicle. Rugged Ridge® All Terrain Floor Liners are essential for everyday use, at work or when your vehicle is used for outdoor adventures. Keep your vehicle clean and free from harmful airborne contaminants that get in your carpet when going through snow, dust, sand or even when you decide to go play in the mud. Rugged Ridge® has you protected when its necessary to catch the second scoop of your little ones ice cream after the big game. No jobs too big with our 3/8" Deep Tread Technology chevron pattern floor liners, that are up to 3 times the depth of the other floor liners for maximum floor protection. Rugged Ridge® All Terrain Floor Liners are available for domestic and foreign vehicle manufactured applications.



Protects your vehicles interior from whatever nature throws at you!



Deep Treads keep water/snow away from your clothing.



Easy to Clean; simply hose off and go!



Exclusive Self Sealing floor hook attachment keeps moisture out while securing the liner!
[Available on most applications]



12950.15



12975.23

Cherokee 84-12

YEAR	MAKE/MODEL	Front	Universal Rear	Custom Rear	Cargo Liner	Jeep® Logo Front
84-01	Cherokee NEW	12920.25	82950.01	-	-	DMC-12920.25
93-98	Grand Cherokee NEW	12920.26	82950.01	-	-	DMC-12920.26
99-04	Grand Cherokee NEW	12920.27	82950.01	-	-	DMC-12920.27
05-10	Grand Cherokee NEW	12920.28	82950.01	-	-	-
06-09	Commander NEW	12920.28	82950.01	-	-	-
07-12	Compass NEW	12920.30	-	12950.17	12975.25	-
07-12	Patriot NEW	12920.30	-	12950.17	12975.25	-
08-12	Liberty NEW	12920.31	-	12950.20	12975.27	-
11-12	Grand Cherokee NEW	12920.29	82950.01	12950.15	12975.23	-

1. Coming Soon. Available 2012.

ROLL/PITCH INDICATOR

BACK SEAT HEATER



Keep your Jeep® warm in the winter with the Rugged Ridge® Back Seat Heater. This 300 watt, 12 volt heater will warm your vehicle quickly keeping you and your passengers comfortable. Designed to fit on the rear wheel well of any Jeep®, this easy to use heater wires easily to your existing electrical system. Some drilling may be required.

Back Seat Heater	Part #
All Jeeps® & SUV's	13150.01

Rugged Ridge® offers two styles of Clinometers for those off-road adventures. Each style features two gauges: left displays side by side angle and the right displays front to back angle. Each display has a graphic read out that shows angles in degrees for quick reference. Choose from the Compass model that has a floating compass in the middle or the lighted version for night time use (some wiring required). Each attach to the dash of your Jeep® with automotive grade double sided tape or can be permanently mounted with screws.



13309.01



13309.02

Clinometer	Part #
With compass	13309.01
With light, Each	13309.02



FLASHLIGHT HOLDERS



11238.06 Flashlight Mounting Brackets

Flashlight Holders	Part #
Mounting Brackets, for 1.5" Diameter Flashlights, Universal Application, drilling required, Pair	11238.06

BILLET SHIFT KNOBS

Upgrade the look of your Jeep® with a billet aluminum shift knob from Rugged Ridge®. These highly polished shift knobs attach directly to your original equipment shifter with no drilling. Simply unscrew your current knob and replace it with the billet shift knob. There are two styles to choose from: a solid polished version and a shift pattern version. Do not forget to also replace the transfer case knob as well! The combination creates the ultimate look! Please measure your shift/transfer case threads before ordering.



11420.23



11420.04

11420.20
5-Speed
Shift Knob

DUAL CUP HOLDER



Discription	Part #
84-01 XJ Cherokee, Black NEW	12035.50

Billet Shift Knobs w/ Shift Pattern*	Size	Part #
97-01 Cherokee, 97-98 Grand Cherokee, 5 Speed Manual	10 mm x 1.5 metric	11420.20
84-96 Cherokee, 93-96 Grand Cherokee, 5 Speed Manual	3/8" - 16 Thread	11420.22
Billet Shift Knobs w/o Shift Pattern*	Size	Part #
97-01 Cherokee, 97-98 Grand Cherokee, 5 Speed Manual	10 mm x 1.5 metric	11420.23
84-96 Cherokee, 93-96 Grand Cherokee, 5 Speed Manual	3/8"-16 Thread	11420.21
Transfer Case Knob w/ Pattern	Size	Part #
88-01 Cherokee, 93-98 Grand Cherokee, With NP231	10 mm x 1.5 metric	11420.20

* NOTE: please measure your gear shift thread size prior to ordering



Exterior Accessories

BUG DEFLECTOR



Rugged Ridge Bug Deflector Shield	Part #
84-01 Cherokee [XJ], Smoked Acrylic NEW	11350.10
93-98 Grand Cherokee [ZJ], Smoked Acrylic NEW	11350.11
99-04 Grand Cherokee [WJ], Smoked Acrylic NEW	11350.12
05-10 Grand Cherokee [WK], Smoked Acrylic NEW	11350.13
02-07 Liberty KJ, Smoked Acrylic NEW	11350.20
08-10 Liberty KK, Smoked Acrylic NEW	11350.21

WINDOW RAIN DEFLECTOR

NEW!



Rugged Ridge Window Rain Deflector	Part #
84-01 Cherokee [XJ], Front and Rear, Smoked Acrylic NEW	11351.20
93-98 Grand Cherokee [ZJ], Front and Rear, Smoked Acrylic NEW	11351.21
99-04 Grand Cherokee [WJ], Front and Rear, Smoked Acrylic NEW	11351.22
05-10 Grand Cherokee [WK], Front and Rear, Smoked Acrylic NEW	11351.23
02-07 Liberty KJ, Front and Rear, Smoked Acrylic NEW	11351.30
08-10 Liberty KK, Front and Rear, Smoked Acrylic NEW	11351.31

REAR EURO-GUARDS

Rear Euro Guards	Steel	Black
99-04 Grand Cherokee, Pair	11103.20	11226.20
05-10 Grand Cherokee, Pair	11103.21	11226.21



11226.20



11103.21



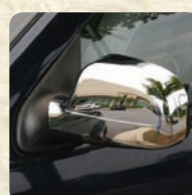
[A] 13310.10



[B] 13310.30



[C] 13310.37



[D] 13310.12



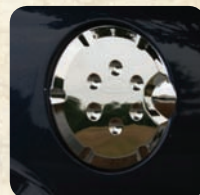
[E] 13310.32



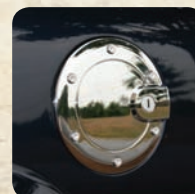
[F] 13310.22



[H] 13310.33



[I] 13310.15



[J] 13310.25



[G] 13310.13



[K] 13310.17



[L] 13310.14



[P] 13310.31



[M] 13310.16



[O] 13310.21



[N] 13310.11

Complete the look of your rig with chrome accessories from Rugged Ridge®. These UV-treated chromed plastic covers attach to your vehicle with durable double sided tape; the same tape used in attaching complete body kits to vehicles! Available in easy to use kits for upgrading your Grand Cherokee and Liberty.

Chrome Accessories for Jeep®	Part #
A Headlight Trim Covers, Chrome, 99-04 Grand Cherokee, Pair	13310.10
B Headlight Trim, Chrome, 02-04 Liberty, Pair	13310.30
C Grille Inserts Chrome, 7 Piece Kit, 02-04 Liberty	13310.37
D Mirror Covers Chrome, Pair, 99-04 Grand Cherokee	13310.12
E Mirror Covers Chrome, Pair, 02-04 Liberty	13310.32
F Mirror Covers Chrome, Pair, 05-07 Grand Cherokee	13310.22
G Door Handle Covers Chrome, 10 Piece Kit, 99-04 Grand Cherokee	13310.13
G Door Handle Covers Chrome, 8 Piece Kit, 05-07 Grand Cherokee	13310.23
H Door Handle Covers Chrome, 10 Piece Kit, 02-04 Liberty	13310.33
H Door Handle Covers Chrome, 4 Piece Kit, 08-10 Liberty	13311.13
I Fuel Door Cover Chrome, Each, 99-04 Grand Cherokee	13310.15
J Fuel Cover Chrome, Each, Grand Cherokee 05-07	13310.25
J Fuel Cover Chrome, Each, Liberty 02-04	13310.35
K Pillar Trim Chrome, Pair, 99-04 Grand Cherokee	13310.17
L Lift Gate Hinge Covers Chrome, Each, 99-04 Grand Cherokee	13310.14
L Lift Gate Hinge Covers Chrome, Each, 05-07 Grand Cherokee	13310.24
M Lift Gate Accent Trim Chrome, Each, 99-04 Grand Cherokee	13310.16
M Lift Gate Accent Trim Chrome, Each, 05-07 Grand Cherokee	13310.26
N Tail Light Trim Covers Chrome, Pair, 99-04 Grand Cherokee	13310.11
O Tail Light Covers Chrome, Pair, Grand Cherokee 05-07	13310.21
P Tail Light Covers Chrome, Pair, 02-04 Liberty	13310.31



**8,500LB LINE SPEED & AMP DRAW-FIRST LAYER
for Wire Cable and Synthetic Rope Winches**

Line Pull	Lbs	No Load	2000	4000	6000	8000	8500
Line Speed	Ft/min	37.2	18	13.1	10.2	8.2	7.2
Motor Current	amps	70	190	260	335	410	425



8,500 LB. Heavy Duty Winch with Steel Cable Part #
8,500 LB Heavy Duty Winch with Steel Cable 15100.01

- Durable 6.6 HP Series Wound motor for long life and extra pulling power
- Tough 3 stage planetary gear box with a 218:1 gear ratio delivering power and reliability
- Includes 94' of 23/64" diameter wire rope and latched hook
- Automatic load holding brake system (in the drum brake system)
- Exclusive light mount roller fairlead included- allows for easy no-drill mounting of up to 2 off road lights!
- Tough stainless hardware is used on the body of the winch to eliminate rust
- Each winch includes a durable 12' all weather cable remote solenoid box that can be mounted in multiple positions (over cable or over motor) and angles to accommodate most winch bumpers including the Rugged Ridge® XHD Bumper System!
- Limited 3 year warranty against manufacturing defects

RUGGED RIDGE HEAVY DUTY 8,500 LB WINCH

- Durable 5.5 HP Series Wound motor for long life and extra pulling power
- Tough 3 stage planetary gear box with a 172.8:1 gear ratio delivering power and reliability
- Includes 94' of 5/16" diameter wire rope and latched hook
- Automatic load holding brake system (in the drum brake system)
- Exclusive light mount roller fairlead included- allows for easy no-drill mounting of up to 2 off road lights!
- Tough stainless hardware is used on the body of the winch to eliminate rust
- Each winch includes a durable 12' all weather cable remote solenoid box that can be mounted in multiple positions (over cable or over motor) and angles to accommodate most winch bumpers including the Rugged Ridge® XHD Bumper System!
- Limited 3 year warranty against manufacturing defects

EXCLUSIVE LIGHT MOUNT ROLLER FAIRLEAD INCLUDED WITH BOTH WIRE CABLE WINCHES



RUGGED RIDGE HEAVY DUTY 10,500 LB WINCH

ALL WEATHER 12' CABLE REMOTE INCLUDED WITH ALL WINCHES



10,500 LB. Heavy Duty Winch with Steel Cable Part #
10,500 LB Heavy Duty Winch with Steel Cable 15100.10



**10,500LB LINE SPEED & AMP DRAW-FIRST LAYER
for Wire Cable and Synthetic Rope Winches**

Line Pull	Lbs	No Load	2000	4000	6000	8000	10500
Line Speed	Ft/min	29.5	14.4	11.9	9.85	8.7	7.2
Motor Current	amps	70	170	240	310	380	425

RUGGED RIDGE SYNTHETIC ROPE PERFORMANCE WINCHES!

We have taken the high quality features of our regular winch and replaced the steel cable with genuine Dymeema SK-75 Synthetic Rope for a lighter weight, high performance winch option. The synthetic rope used on Rugged Ridge winches is custom designed for heavy duty use and combined with the included polished aluminum hawse fairlead and 12' hook, will provide the ultimate in pulling power.

Rugged Ridge 8,500 Synthetic Rope Winch- 11/32" x 100', Breaking Force 16,550lbs

- Constructed with Dyneema SK-75 fiber from the Netherlands.
- Same high strength fabric used in ballistic body armor.
- Significantly stronger than same diameter steel cable and up to 40% stronger than Kevlar.
- 1/7 the weight of the same diameter wire rope.
- Will not splinter, kink or curl like wire rope & floats in water.
- Specially coated to be resistant to UV, abrasions, and chemical solvents.
- Heavy Duty 11/32" 12-strand braid with a breaking force of 16,550lbs
- Hawse fairlead included

ALL WEATHER 12' CABLE REMOTE INCLUDED FOR ALL WINCHES



8,500 LB Performance Winch w/ Synthetic Rope Part #
8,500 LB Performance Winch with Synthetic Rope 15100.02

Rugged Ridge 10,500 Synthetic Rope Winch-3/8" x 94', Breaking Force 19,310lbs

- Constructed with Dyneema SK-75 fiber from the Netherlands.
- Same high strength fabric used in ballistic body armor.
- Significantly stronger than same diameter steel cable and up to 40% stronger than Kevlar.
- 1/7 the weight of the same diameter wire rope.
- Will not splinter, kink or curl like wire rope & floats in water.
- Specially coated to be resistant to UV, abrasions, and chemical solvents.
- Heavy Duty 3/8" 12-strand braid with a breaking force of 19,310lbs
- Protective sleeves keep line from overheating on winch drum.
- Hawse fairlead included

ALL RUGGED RIDGE SYNTHETIC WINCHES INCLUDE AN ALUMINUM HAWSE FAIRLEAD



10,500 LB Performance Winch w/ Synthetic Rope Part #
10,500 LB Performance Winch with Synthetic Rope 15100.11

WHY SYNTHETIC WINCH ROPE?

Stronger and lighter, the two key elements of Synthetic Rope that make it the choice of competition off road vehicles everywhere. Rugged Ridge high strength synthetic Winch Rope is constructed from genuine Dyneema SK-75 fiber imported from the Netherlands. This revolutionary fiber is the choice of off-road enthusiast worldwide. It is stronger and lighter than wire rope and never kinks or splinters! Our synthetic line is woven from twelve UV-treated strands, resulting in increased strength, and a power to weight ratio unmatched by wire rope. Each synthetic rope comes with a protective sleeve that prevents it from over heating on the winch drum, black powder coated latched hook, stainless steel thimble, and is pre-terminated end for ease of installation. Synthetic rope does not store energy like steel cables, and in the event of a failure it is much less likely to result in severe injuries caused by the whiplash of broken wire rope.

- Significantly stronger than same diameter steel cable and up to 40% stronger than Kevlar.
- Same high strength fabric used in ballistic body armor.
- 1/7 the weight of the same diameter wire rope.
- Will not splinter, kink or curl like wire rope & floats in water.
- Protective sleeves keep line from overheating on winch drum.



Synthetic Winch Rope

	Part #
Synthetic Winch Rope 1 1/32" x 100', Breaking Force of 16,550 lbs, Each NEW	15102.10
Synthetic Winch Rope 3/8" x 94', Breaking Force of 19,310 lbs, Each NEW	15102.11

WINCH COVER

Keep your winch looking as good as the day you bought it with the Rugged Ridge winch cover. Constructed of durable vinyl with reinforced grommets. Custom fit for Rugged Ridge Winches



Rugged Ridge Winch Cover

	Part #
Winch Cover, All Rugged Ridge Winches NEW <small>*Will not fit UTV winches</small>	15102.02

ALUMINUM HAWSE FAIRLEAD

This hawse fairlead will help guide the synthetic winch rope to and from the spool. *Required for synthetic rope. Not recommended for steel rope.



Aluminum Hawse Fairlead

	Part #
Aluminum Hawse Fairlead, 10", Each	11238.01

WINCH CABLE HANDLE



15102.01

The winch hook handle is the perfect solution for handling a winch cable. It is constructed of tough nylon webbing with a molded sure-grip handle. Perfect for getting a good solid grip of the winch hook when free spooling cable for a recovery and a safe way to respool your cable without endangering your fingers. Just slip your winch hook through the nylon webbing and you are ready to rock!

Winch Cable Handle

	Part #
Winch Cable Handle, Each NEW	15102.01

LIGHT MOUNT ROLLER FAIRLEAD

Turn your roller fairlead into an off road light mount! This revolutionary new design allows for two off road lights to be easily mounted while not interfering with the winch operation.



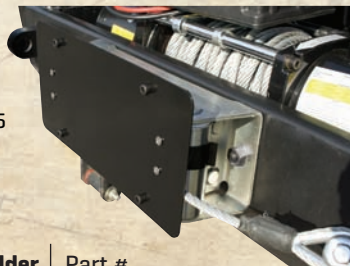
Light Mount Roller Fairlead

	Part #
Light Mount Roller Fairlead, Each NEW	11238.03

11238.03

ROLLER FAIRLEAD LICENSE PLATE HOLDER

If your state requires a front license plate, we have a solution for you. Instead of drilling holes in your bumper or risking not running a front plate, this easy to install license plate holder attaches to your winch roller fairlead. Simply bolt your license plate to the bracket and snap the holder in place. Your license plate is now securely mounted yet easily removable for winching.



11238.05

Roller Fairlead License Plate Holder

	Part #
Roller Fairlead License Plate Holder, Each NEW	11238.05



RECOVERY GEAR

20,000 lbs Kit

- Durable Recovery Gear Bag.
- Heavy Duty 8" 20,000lb Snatch Block Pulley.
- Premium 2" x 30' 20,000lb Recovery Strap.
- Premium 3" x 6' 30,000lb Tree Trunk Protector Strap.
- Heavy Duty 9,500lb zinc coated pair of D-Rings.
- Winch Line Dampener.
- Pair of Leather Recovery Gloves.

30,000 lbs Kit

- Durable Recovery Gear Bag.
- Heavy Duty 9" 30,000lb Snatch Block Pulley.
- Premium 3" x 30' 30,000lb Recovery Strap.
- Premium 3" x 6' 30,000lb Tree Trunk Protector Strap.
- Heavy Duty 13,500lb zinc coated pair of D-Rings.
- Winch Line Dampener.
- Pair of Leather Recovery Gloves.

The Rugged Ridge Recovery Kit includes everything you need to help your buddy next time he gets stuck in the mud. The durable carrying case is filled with our most popular recovery products to make sure you can get out of those trouble spots quickly and safely. Each kit contains the following:



NEW!

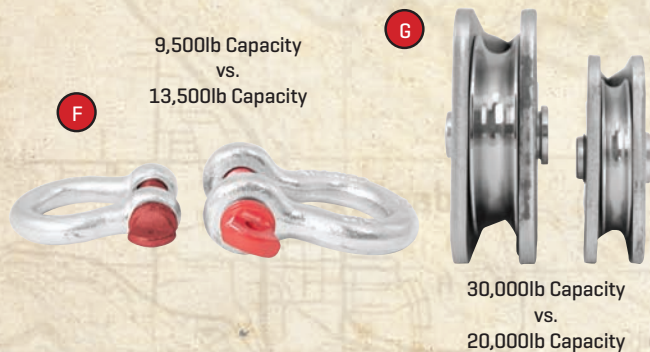
Rugged Ridge Recovery Gear Kit

Part #

20,000 lb, Recovery Gear, Kit, Universal Application	15104.25
30,000 lb, XHD Recovery Gear Kit, Universal Application NEW	15104.28

Recovery Gear also sold separately.

Don't Need Everything In Our Recovery Kit? Customize Your Your Own And Get Just What You Need!



Rugged Ridge Recovery Gear

Part #

A Recovery Strap 3" x 30' 30,000 lbs, Each NEW	15104.01
A Recovery Strap 2" x 30' 20,000 lbs, Each NEW	15104.02
A Recovery Strap 4" x 30' 40,000 lbs, Each NEW	15104.03
B Tree Trunk Protector, 3" x 6' 30,000 lbs, Each NEW	15104.10
B Tree Trunk Protector, 2" x 6' 20,000 lbs, Each NEW	15104.11
C Recovery Bag, Each NEW	15104.40
D Recovery Gloves, Pair NEW	15104.41
E Winch Line Dampener, Each NEW	15104.43
F Heavy Duty 9,500 lb Zinc Coated D-Rings, Pair NEW	11235.01
F Heavy Duty 13,500 lb Zinc Coated D-Rings, Pair NEW	11235.03
G Heavy Duty 8" 20,000 lb Snatch Block Pulley, Each NEW	11235.10
G Heavy Duty 9" 30,000 lb Snatch Block Pulley, Each NEW	11235.11

The Rugged Ridge Tire Repair Kit is essential recovery gear for any road or trailside tire repair. The kit includes: 2 sturdy aluminum handles, 2 reamers, 2 needles, 2 Allen head wrenches, and 25 self vulcanizing tire plugs all self contained in a heavy duty storage case. Be prepared for what ever the trail throws at you!

Rugged Ridge Tire Repair Kit

Part #

Tire Repair Kit, Each NEW	15104.51
----------------------------------	----------



TIRE REPAIR KIT

Fully inflated tires are great for the road and gas mileage, but they deliver a washboard ride on the trail. Air down your tires for a softer ride and more tread grip. Rugged Ridge offers two great kits to fit your lifestyle and budget. Made from 100% brass and are fully adjustable in 3 psi. increments. Once you find your desired setting you can lock the deflators where they bleed to the same tire pressure each and every time they are installed. So, you can deflate your tires quickly before heading out on the trail.

Rugged Ridge Adjustable Tire Deflator Kit

Part #

4 Piece Kit NEW	15104.53
------------------------	----------

ADJUSTABLE TIRE DEFLATOR KIT



Fully inflated tires are great for the road and gas mileage, but they deliver a washboard ride on the trail. Air down your tires for a softer ride and more tread grip. The Tire Deflator Kit includes 4 tire deflators that will allow you to easily deflate your tires before heading out on the trail. All pieces connect together onto a key chain for ease.

Rugged Ridge Tire Deflator Kit

Part #

Tire Deflator Kit, 4 Pieces	15104.50
-----------------------------	----------

The Rugged Ridge Tri Fold Recovery Shovel is a fully functional collapsible shovel that features two serrated edges for cutting or digging. The heavy duty black powder coated body is 23 inches when open and folds to a mere 9 inches. It can be stowed easily in any vehicle, but is still rugged enough for the toughest of jobs. Includes durable storage case.

Rugged Ridge Tri Fold Off Road Shovel

Part #

Tri Fold Off Road Shovel, Each NEW	15104.42
---	----------

KEYCHAIN-TIRE DEFLATOR KIT

TRI FOLD RECOVERY SHOVEL



HID & Halogen Lighting

HID LIGHTING

We mated the brilliance of High Intensity Discharge bulbs with the rugged construction of our traditional halogen off road lights. The result is more efficient and powerful beam better capable of illuminating the night sky. HID lights are 2½ times more powerful than halogen lights and draw 60% less current than a standard 100W fog light. Our 6" and 5" HID Lights are constructed with heavy duty stamped steel housings, and are available in corrosion resistant black or stainless steel finish. Rugged Ridge® lights feature waterproof connections, internal ballast, and a reinforced multi-directional mounting base. The lights are available individually or in kits containing a pre-terminated wiring harness, relay, impact resistant stone guards and illuminated dash switch.

- 5", 6", 7" HID light assemblies available.
- 12V 35W 4200K HID Bulb.
- Internal ballast - no external ignition ballast to install.
- 2½ times more powerful than halogen bulbs.
- Draws 60% less current than a standard 100W fog light.
- HID Lights include impact resistant stone guard.
- The average life of an HID bulb is 2000 hours, compared to 500-1000 hours for a halogen unit.



Lights are available individually.
All include impact resistant stone guards



Kits include a pre-terminated wiring harness, relay and illuminated dash switch



15205.51



15206.01



15205.63

HID Off Road Lighting

	Single Light	2 Light Kit w/ Wiring Harness	3 Light Kit w/ Wiring Harness
6" Round, Black	15205.01	15205.51	15205.61
5" Round, Black	15205.02	15205.52	15205.62
7" Round, Black, Plastic	15205.03	15205.53	15205.63
5" Round, Black, Plastic	15205.04	15205.54	15205.64
6" Round, Stainless	15206.01	15206.51	15206.61
5" Round, Stainless	15206.02	15206.52	15206.62

HALOGEN LIGHTING

Designed, engineered, and tested to stand up to the rigors of off road use, our lights are constructed with heavy-duty stamped steel housings, and crystal glass lenses set in shock absorbent weatherproof rubber gaskets. The brilliant 12V 100 watt halogen bulbs slice through fog, rain or snow to help illuminate the road even under the toughest conditions. Available in Round, Rectangular and Slim housings in either a black or stainless steel finish to best suit your application. Slim lights feature a narrow profile just 2 13/16" thick! This sleek design allows them to be mounted in places most lights won't fit. They are perfect for windshield and grille mount light systems. The lights are available individually or in kits containing a pre-terminated wiring harness, relay, impact resistant stone guards [white stone guards with stainless, black with black] and illuminated dash switch.



15207.51

Rugged Ridge® Off Road Lights, 100W

	Single Light	2 Light Kit w/ Wiring Harness	3 Light Kit w/ Wiring Harness
6" Round, Black	15207.01	15207.51	15207.61
5" x 7", Black	15207.05	15207.55	15207.65
6" Slim, Black	15207.10	15207.58	15207.68
6" Round, Stainless	15208.01	15208.51	15208.61
6" Slim, Stainless	15208.10	15208.58	15208.68

Halogen Light Accessories

	Part #
Off Road Light Cover, 6-Inch Black	15210.53
Off Road Light Cover, 6-Inch White	15210.54
Off Road Light Cover, 5x7-Inch Black	15210.55
Off Road Light Cover, 5x7-Inch White	15210.56
Off Road Light Cover, 6-Inch Black Slim	15210.57
Off Road Light Cover, 6-Inch White Slim	15210.58
Off Road Light Installation Harness, For Pair Of Lights	15210.62
Off Road Light Installation Harness, For Three Lights	15210.63
Halogen H3 Off Road Light Bulb, 100w Replacement	15210.82
Halogen H3 Off Road Light Bulb, 130w Replacement	15210.83

Slim lights feature a narrow profile - just 2 13/16" thick!



Rectangular lights give your vehicle a whole new look

Crystal glass lenses set in shock absorbent weatherproof rubber gaskets.



Each lights includes an impact resistant stone guard.

Multi-directional mounting base allows you to focus light where you need it the most.

HID LIGHT ACCESSORIES

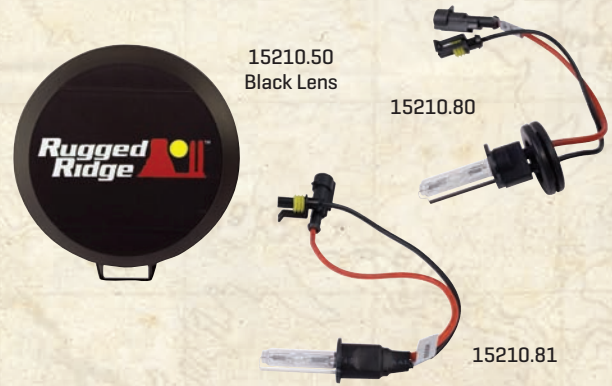
DON'T LET NIGHT FALL ON YOUR ADVENTURE.
 CREATE YOUR OWN DAYLIGHT LONG AFTER THE SUN HAS GONE DOWN!

STANDARD HEADLIGHTS
 LOWER LIGHT OUTPUT IDEAL FOR CITY DRIVING

VS.

BUMPER MOUNTED HID LIGHTS
 EXTREME OUTPUT TO LIGHT UP THE TRAILS

Accessories/Replacement Parts	Part #
HID Lighting Covers, 7",Smoked	15210.51
HID Lighting Covers, 6",Black	15210.50
HID Lighting Covers, 5",Black	15210.52
HID Lighting Installation Harness for a pair of lights	15210.60
HID Lighting Installation Harness for three lights	15210.61
Replacement HID Bulb for 5" and 6" lights	15210.80
Replacement HID Bulb for 7" lights	15210.81



ROCKER PANEL SWITCHES



- Rocker Style Switch.
- Heavy Duty Marine Grade surpasses OE Specifications.
- Available in four great colors: Red, Blue, Green and Amber.
- Switch illuminated in the "ON" Position.
- Three post terminal, 20-amp design works with most aftermarket accessories.

Rocker Panel Switches	Part #
Rocker Switch Amber	17235.01
Rocker Switch Red	17235.02
Rocker Switch Blue	17235.03
Rocker Switch Green	17235.04

ROCKER SWITCH HOUSING KIT



This housing kit allows you to mount 2, 3, or 4 switches to numerous dash locations by using a series of interlocking interchangeable pods.

Rocker Switch Housing Kit	Part #
Mounts 2,3 OR 4 Switches	17235.20

Rocker Switch Pods	Part #
Rocker Switch Housing Kit, Universal Application. Includes Four Interlocking Switch Housings and Four Different Color Rocker Switches	17235.89

CRYSTAL HB2/H4 CONVERSION HEADLIGHT



Replace your old sealed beam bulb headlights with these Crystal H4 Conversion Headlights. This two-piece headlight and bulb is brighter, more economical and environmentally friendly than a conventional sealed beam headlight. The headlights and bulbs are SAE / DOT compliant.

Crystal HB2/H4 Headlight	Part #
200mm Rectangular, H2 Bulb, Cherokee 84-01 and Various Non Jeep Applications, Pair, Includes Bulbs NEW	12402.82

HEAVY-DUTY STEERING BOX BRACE

Heavy-duty design supports your steering box during those offroad adventures. Easy to install bolt on design.



HD Steering Box Brace	Part #
84-01 Cherokee	18021.05

HEAVY-DUTY STEERING KITS & COMPONENTS

18050.82



Heavy Duty Crossover steering systems prevent "bump steer"!

HEAVY-DUTY DIFFERENTIAL COVERS

Indestructible! You won't break these covers, we guarantee it. Made of 3/8" cast steel, painted black inside and out, these heavy-duty covers are designed to protect your differential and all its working parts for as long as you own your vehicle. These indestructible covers have been "44 caliber tested" - if they can take a bullet at point blank range (don't try this at home!), they can take all that the trail has to offer. Available for most popular Dana differential types and include extra reinforcement protection for the fill plug area. All mounting hardware and instructions are included for easy of installation.

Heavy-Duty Kits	Part #
Complete Heavy-Duty Crossover Steering Conversion Kit [Includes 4 Tie Rod Ends & Steering Dampener Bracket] 84-01 Cherokee (w/under 4" lift), 93-98 Grand Cherokee [6 Cylinder only]	18050.82

Heavy-Duty Steering Components	Part #
Heavy-Duty Tie Rod [Includes 2 Tie Rod Ends] 84-01 Cherokee 93-98 Grand Cherokee [6 Cylinder Only], all with stock steering linkage only, not for use with kit #18050.82, Each	18050.51
Heavy-Duty Tie Rod Steering Dampner Bracket [for use in kit #18050.82], Each	18040.50

Heavy-Duty Tie Rod Ends	Part #
Heavy-Duty Tie Rod End 7/8", Left Hand Thread, Each	18043.10
Heavy-Duty Tie Rod End 7/8" Right Hand Thread, Each	18043.26
Heavy-Duty Tie Rod End With Drag Link Connection, 7/8" Left Hand Thread, Each	18043.27

Differential Cover	Part #
Dana 30, Each	16595.30
Dana 35, Each	16595.35
Dana 44, Each	16595.44



HEAVY-DUTY DIFFERENTIAL SKID PLATES

Differential Cover	Part #
Dana 30 Diff. Skid Plate	16597.30
Dana 30 Diff. Skid Plate with Jeep® Logo	DMC-16597.30
Dana 35 Diff. Skid Plate	16597.35
Dana 35 Diff. Skid Plate with Jeep® Logo	DMC-16597.35
Dana 44 Diff. Skid Plate	16597.44
Dana 44 Diff. Skid Plate with Jeep® Logo	DMC-16597.44



FRONT ADJUSTABLE TRACK BAR & FRAME STIFFENER

The Adjustable Track Bar's function is to properly locate and center the front axle under the body of your Jeep® and improve its handling capabilities and steering geometry. This kit is designed to correct misalignment that can develop with Jeeps® with 4" of lift. Our track bar tubes are constructed with 1.25" OD x.25" wall DOM tubing. The bar is powder coated black to prevent corrosion and includes: polyurethane bushings, heavy duty mounting bracket and features a 7/8" zinc plated rod end. For the ultimate in front-end rigidity add on our Frame Stiffener #12035.51. This piece ties the front frame rails together while bracing the track bar mount. It is specifically designed for use with the Adjustable Track Bar [#18205.05] only.

18205.20 Track Bar/ Frame Stiffener Kit



Front Adjustable Track Bar and Frame Stiffener	Part #
Front Adjustable Track Bar, 84-01 Cherokee XJ, 93-98 Grand Cherokee *	18205.05
Frame Stiffener, 84-01 Cherokee XJ, 93-98 Grand Cherokee **	12035.51
Track Bar/Frame Stiffener Kit [consists of 18205.05 & 12035.51]	18205.20

* For use with 4" & over lifts
** Can only be installed in conjunction with P/N 18205.05

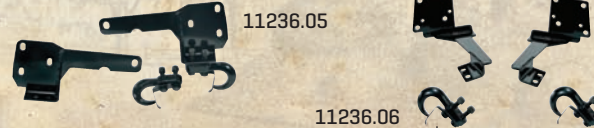


OFFICIAL LICENSED PRODUCT

MOPAR, JEEP, DODGE, HEMI, PLYMOUTH, RAM, and CHRYSLER vehicles, images and logos are trademarks of Chrysler Group LLC used under license to Omix-Ada®. © Chrysler Group LLC 2011

HEAVY-DUTY TOW HOOK KITS

Don't get your Cherokee or Grand Cherokee stuck on trails without a Rugged Ridge® Heavy-duty XJ or ZJ Tow Kit on the front. The 1/4 inch thick steel plate is form bent for maximum strength then powder coated for protection from the elements.



Heavy-Duty Tow Hooks	Part #
84-01 Cherokee XJ, Pair	11236.05
93-98 Grand Cherokee WJ, Pair	11236.06

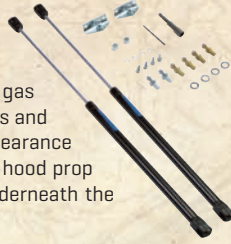
HEAVY-DUTY TRANSFER CASE CROSSMEMBER

Heavy-Duty Transfer Case Crossmember	Part #
84-01 Jeep® Cherokee, Each	12035.60



HOOD LIFT KITS

Eliminate the factory prop rod with a pair of gas charged hood lifts. This kit includes all the brackets and gas shocks needed to clean up the underhood appearance of your Cherokee. This kit is also functional as the hood prop rod will no longer be in the way while working underneath the hood of your XJ. Easy installation.



Description	Part #
Hood Lift Kit XJ Cherokee 84-01 NEW	11252.52
Hood Lift Service Replacement Shock XJ Cherokee 84-01 NEW	11252.82

TRANSFER CASE SLIP YOKE ELIMINATOR KIT

18676.72 Mega Short Slip Yoke Eliminator Kit



Transfer Case Slip Yoke Eliminator Kit	Part #
88-01 Cherokee Slip Yoke Eliminator (with NP231 transfer case) *, Kit	18676.60
88-01 Cherokee Mega Short Slip Yoke Eliminator with Vehicle Speed Sensor (with NP231 transfer case) *, Kit	18676.72
Replacement Bearing for Mega Short Slip Yoke Eliminator Kit #18676.70	18676.74

*CV style drive shaft is required when using this conversion kit.



11237.10 Lockable Spare Tire Mount Bike Carrier

LOCKABLE SPARE TIRE MOUNT BIKE CARRIER

This easy-to-use bike rack mounts to any emergency tire mounting studs. The bike rack carries 2 bikes directly off the spare tire. It is constructed of 2" powder coated steel tubing for maximum rust protection and durability. The bike clamp feature rubber pads to protect your bike's finish. The carrier comes with 2 keys for the locking mechanism. Fits wheel off sets from 2-5/8" to 6". For All Jeep® Outside Spare Tire Applications

Bike Carrier	Part #
Spare Tire Mount Bike Carrier	11237.10

RECEIVER TOW HOOK



Heavy-duty black powder coated tow hook inserts into any 2" style hitch (does not include hitch pin, not designed for towing).

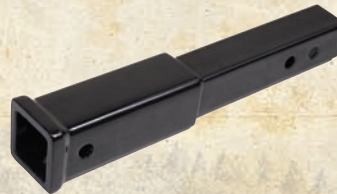
Receiver Tow Hook	Part #
Fits All 2" Receivers	11237.01

RECEIVER HITCH EXTENDER

Constructed from solid steel the extender lengthens your 2" receiver up to 12 inches! [Hitch mount accessories only - not tow rated]

Receiver Hitch Extender	Part #
-------------------------	--------

12" Receiver Hitch Extension, For 2" Hitch, Black Powder Coated



2" RECEIVER HITCH

Includes clip and pin. Ball not included. For Jeep® use only. 2000-lb two rating, 200-lb tongue weight rating.

Ball Mount Receiver Hitch	Part #
---------------------------	--------

2" Square



RECEIVER SHACKLE BRACKET

This heavy-duty steel design fits into any 2" receiver box. It is rated up to 9,500 lbs. pulling capacity on evenly distributed straight pulls. NOTE: never exceed your receiver capacity. Not designed for towing. Does not include hitch pin.

Receiver Shackle Bracket	Part #
All 2" Receivers	11234.01



HITCH BALL

Hitch Ball includes a matching mounting nut and lock washer. Pick from two standard sizes.

Hitch Ball Kit	Part #
----------------	--------

2" x 3/4"

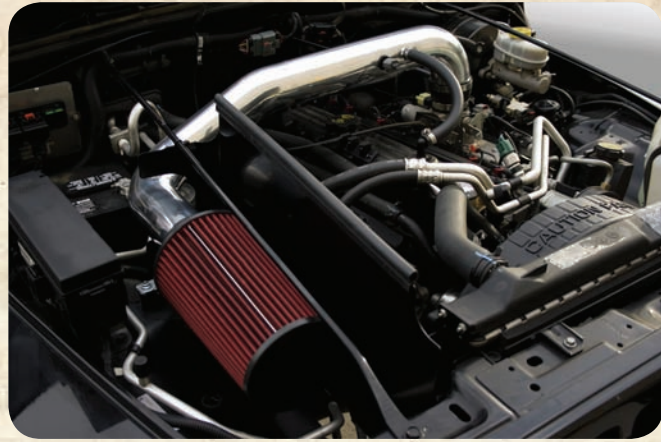
1-7/8" x 3/4"



COLD AIR INTAKES FOR JEEP®

Want more horsepower, better throttle response, and improved acceleration?

A Rugged Ridge® Cold Air Intake System can boost your performance, while helping you keep extra cash in your wallet. Our polished aluminum mandrel bent intake tube replaces the restrictive factory air box to help improve fuel economy. A black powder coated heat shield separates the filter from engine heat, dirt and debris, as cold air is drawn through a high-flow conical air filter. Unlike other reusable air filters, our dry panel design never needs oiling, which keeps your mass airflow sensor from being damaged by excess oil! The simple bolt on installation gives you power you can feel, adding up to 10HP and 12ft lbs or torque, depending on application.



- Polished mandrel bent 6063 aluminum air intake tube.
- Simple no-drill installation bolts on using simple hand tools.
- Includes a high-flow conical dry panel filter that never needs oiling.
- Intake kit includes black powder coated heat shield
- Improves fuel economy up to 10%*
- Adds up to 10HP and 12ft lbs or torque**

Rugged Ridge Cold Air Intake Systems | Part #

1991-01 XJ Cherokee 4.0L	17750.20
1993-98 ZJ Grand Cherokee 5.2L, 5.9L	17750.22

*See <http://www.fueleconomy.gov/feg/maintain.shtm>
 ** Depending on kit

Cherokee 84-12

RUGGED RIDGE HEADERS



17650.01



17650.51



Application:	Steel	Black	409 Stainless	304 Stainless
91-99 Cherokee, 93-98 Grand Cherokee w/ 4.0L Engine	17660.01	17651.01	17650.01	17650.51
00-01 Cherokee, 99-01 Grand Cherokee w/ 4.0L Engine	17660.02	17651.02	17650.02	17650.52

THROTTLE BODY SPACER

The Rugged Ridge® Throttle Body Spacer raises the throttle body 1" above the intake manifold. The lift helps optimize power and performance by drawing in colder denser air. The large bore design allows your system to inhale a larger volume of air producing more horsepower and torque. It features solid aluminum construction with a slick anodized black finish, and is a bolt on performance adder for both 4.0L and 2.5L engines.

- Solid Aluminum Construction.
- Simple no-drill installation bolts on using simple hand tools.
- Includes mounting hardware, gaskets and spacers.
- Black Anodized Finish.



Throttle Body Spacer | Part #

XJ Cherokee 1991-01 4.0L & 91-00 2.5L	17755.01
---------------------------------------	----------



17753.01

CONICAL AIR FILTER

Conical Air Filter

Conical Air Filter, Synthetic, for Cold Air Kit 17750.03 and 17750.20, 70MM Flange, 270MM Length **NEW** | Part # 17753.02

SYNTHETIC AIR FILTER

Unlike other reusable air filters, our dry panel design never needs oiling, which keeps your mass airflow sensor from being damaged by excess oil! Rugged Ridge® performance high flow filters are made from a synthetic fabric and not cotton. Cotton filters are made porous and must be oiled to trap dirt and debris. But that oil reduces air flow through the filter and it can become easily clogged. Our filters are woven from synthetic fabric to allow maximum air flow and particulate filtration. Because our filters never need oiling, they can be cleaned easily with water instead of degreaser, reducing the cost of maintaining the filter over the lifetime of your vehicle.

No oil = No fuss, no mess and improved performance!

Air Filter | Part #

Air Filter, Synthetic, XJ 87-96 2.5L, 4.0L NEW	17752.06
Air Filter, Synthetic, XJ 97-01 2.5L, 4.0L NEW	17752.07
Air Filter, Synthetic, ZJ 93-98 V8 5.2L, 5.9L NEW	17752.08
Air Filter, Synthetic, WJ 99-04 4.0L, 4.7L NEW	17752.09
Air Filter, Synthetic, KJ 02-07, 3.7L NEW	17752.10



17752.09

Designed by a dedicated team of Jeep® enthusiasts, the ORV™ suspension program is one of the most complete programs available. We have looked at each application in detail to provide the very best and most complete solution for your Jeep®. Since we focus the large majority of our attention on Jeep® vehicles, we know the ins and outs of what the best lift solution is depending on your individual needs. Below is a quick reference guide on the ORV™ program to make it easier to choose the lift you need for your particular need. Remember, all ORV™ Kits with shocks include a pair of neoprene wrapped grab handles and an Off Road Organizer for your glove box!

Welcome to ORV™ by Rugged Ridge®!



Ken W.
Katterbach, Germany



Brian H.
Lansdale, PA



Dave G.
Flowery Branch, GA

A FEW WORDS ABOUT PRODUCT SAFETY.

Your safety and the safety of other motorists is very important. Your Jeep® is an off road capable vehicle that readily lends itself to restoration and customization. In considering modifications to your Jeep's® suspension you are the person choosing the combination of suspension, wheels, tires, drive train and accessories that best fit your intended use. Likewise, you are the person responsible for the safety and legality of the vehicle you modify. In modifying your vehicle's suspension, balance your desired off road capabilities against how the vehicle may actually be used off road and on road.

It is not practical or possible to warn about all hazards associated with your Jeep® or modifying your suspension for improved off road capabilities. Start by familiarizing yourself with all vehicle manufacturers' instructions, warnings limited warranties and the instructions and warnings accompanying your aftermarket product.

To help you make informed decisions about safety; this catalog and the instructions accompanying our products have provided certain information in the form of "Notices" and "Warnings". This information alerts you to potential hazards that could hurt you or others.

NOTICE This is a caution against anything which may cause damage to the vehicle or its equipment if the caution is ignored. The Notice includes information about how you can avoid or reduce those risks.

WARNING This is a signal telling you that you CAN BE KILLED or SERIOUSLY HURT if you don't follow the Warning. The Warning includes information about what you must or must not do in order to reduce the risk of injury to yourself and others.

CAUTION This is a signal telling you that you or others CAN BE HURT if you don't follow the instruction. The Caution includes information about how you can avoid those risks.

WARNING HIGHER ROLLOVER RISK

Modifying the suspension of your vehicle to improve off road capabilities involves certain risks. The modified vehicle may handle differently than as factory equipped including increased ride-height; reduced lateral stability and risk of roll-over or other accident. Also, owner's choice of larger tire and wheel combinations may require additional braking force or increased stopping distances.

- Failure to drive this vehicle safely may result in serious injury or damage. Avoid sharp turns or abrupt maneuvers. Do not drive the vehicle under any speed or maneuvering conditions which may cause the vehicle to trip, roll, lose traction or compromise your ability to safely brake in an emergency.
- Familiarize yourself with all vehicle manufacturers and Rugged Ridge® warnings, instructions and limited warranties before driving this modified suspension vehicle. Follow recommended maintenance procedures and routinely inspect your vehicle components for unusual wear or off road damage.
- Rugged Ridge® does not recommend combined use of body lifts with suspension or other lift devices or modification, alteration or fabrication of any Rugged Ridge® suspension product to achieve additional lift. Also be aware that most states have restrictions on height modifications for vehicles used on road. Consult your vehicle owners manual, limited warranties, the instructions and warnings accompanying this product and state law before undertaking these modifications or using your modified suspension vehicle on road. A summary of current regulations affecting modified suspension vehicles is available from www.SEMA.org.
- Always wear seat belts and/or appropriate off road restraints, reduce your speed, tread lightly® and safely enjoy your off road vehicle.

Know your Kits: Though there are many ways to provide extra lift for your Jeep®, ORV™ recommends the following lift options as the best way to Lift your Jeep®:

Poly Spacer Kits: Available for Coil Spring 99-04 Jeep® Grand Cherokees

Coil Spring Kits: Available for 93-98 Jeep® Grand Cherokees and 84-01 Jeep® Cherokees

LIFT OPTIONS EXPLAINED:

• **Poly Spacer Kits** - Used for small lifts, these low cost lifts are designed for on road/light off road use only and incorporate the factory coil springs. With the addition of spacers, the ride of your Jeep® will be stiffer than original and provides very little articulation when off road. Bump stops (also called blocks) should always be a part of the kit as you will be using the factory springs. This method of lifting is the low cost/lower performance solution to lifting your Jeep® vehicle.

• **Coil Lift Kits** - Used for medium to large lifts, these lifts are designed for on road and moderate to severe off road use. Coil Spring kits provide the best way to give extra lift and still maintain OE ride characteristics. The 2" - 4" kits should offer new springs and extended bump stops as listed above as well as rear track bar bracket/brace to ensure proper centering of the axle and a secure fit.

POLY SPACER KITS



Coil spring spacers are made from high density polyurethane.

COIL SPRING KITS



All ORV™ springs are constructed of 5160H hot rolled bar, keeps its memory so the spring will not sag.

All ORV™ springs are set to original factory rates. Provides a better ride both on and off road.

All ORV™ coil springs are powder coated, E-coated 5/8" coil for long life and strength.



18415.80 Poly Spacer Kit

POLY BUSHINGS



All bushings are made from high density injection molded Polyurethane.

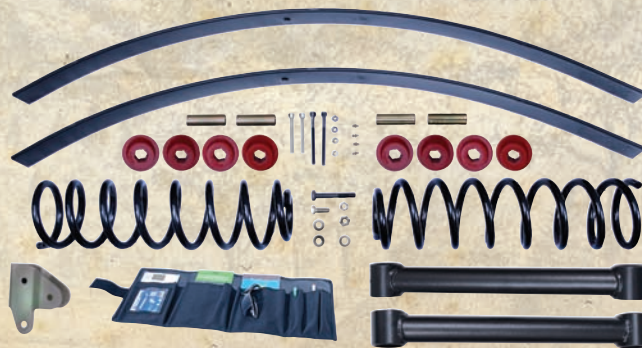


18401.75 Coil Lift Kit

BRACKET/BRACES



Beefy powder coated stamped steel brackets include grade 5 hardware.



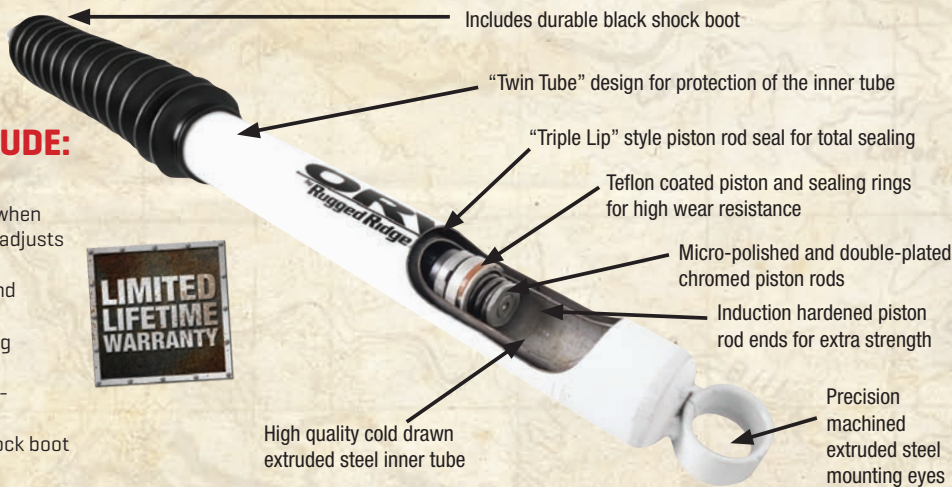
18401.70 Leaf Spring Kit

ORV™ SHOCKS

ORV™ only uses nitrogen charged gas shocks for all their kits. Though a little more money, the nitro gas shock in combination with the ORV™ kits provide a better ride both on and off road. By using an ORV™ lift kit and matching gas shocks, you optimize the suspension's capabilities giving you a better ride both on and off road. Another advantage to Nitro gas shocks is their ability to prevent body roll.

ORV™ SHOCK FEATURES INCLUDE:

- 150 PSI pressurized Nitrogen gas
- Internal valving - the internal orifice will rotate when the piston moves more than 2" - automatically adjusts to make the ride as smooth as possible
- Twin tube construction to lower heat build up and protect the shock from off road obstacles
- Constructed to ORV™ specifications by a leading Shock manufacturer
- Bonded Iron 14mm piston with extra chroming - provides for a longer, rust free life
- Includes polyurethane bushings and a black shock boot
- Limited lifetime warranty on the shocks



ORV™ Shocks	Front	Extended	Collapsed	Rear	Extended	Collapsed
ORV Nitrogen Series Shock, 84-01 Jeep® Cherokee XJ, 3" Lift	18465.05	22.75"	13.54"	18465.06	22.58"	13.71"
ORV Nitrogen Series Shock, 93-98 Jeep® Grand Cherokee ZJ 3" Lift	18465.05	22.75"	13.54"	18465.02	22.58"	13.71"
ORV Nitrogen Series Shock, 99-04 Jeep® Grand Cherokee WJ 2" Lift	18465.05	22.75"	13.54"	18465.13	24.84"	14.82"



ORV™ STEERING STABILIZERS

Add a splash of color to your rig with colored shock boots from Rugged Ridge®. These durable shock boots keep mud and debris from prematurely ruining your shocks and they look great too! Works on ORV™ Nitrogen Shocks and most other brands as well! Sold each.

ORV™ Steering Stabilizers	Part#
Shock Boot, Black, ORV Suspension, Universal Application NEW	18479.50
Shock Boot, Red, ORV Suspension, Universal Application NEW	18479.51
Shock Boot, Blue, ORV Suspension, Universal Application NEW	18479.52

ORV™ STEERING STABILIZERS

ORV™ recommends upgrading your current steering stabilizer or adding a stabilizer on all lifted Jeep® vehicles. The ORV™ Steering stabilizer dampens out the roughness of the highway and the vibration from running larger tires and wheels. ORV™ Hydraulic Stabilizers also make it easier to move those larger tires and wheels both on and off road. These noticeable handling improvements are well worth the small investment!

ORV™ Steering Stabilizers	Part#
ORV Hydraulic Series Steering Stabilizer, 84-01 Jeep® Cherokee XJ	18475.02
ORV Hydraulic Series Steering Stabilizer, 93-98 Jeep® Grand Cherokee ZJ	18475.02



DROP PITMAN ARMS

Lifting a vehicle takes more than just slapping on taller springs. The stock steering linkage is designed for use with the stock height suspension. The steering linkage angles of a lifted vehicle are more extreme and influenced by suspension travel. This drop pitman arm helps reduce the angle of your drag link and reduce bumpsteer created when a suspension lift is installed.

18006.50



Drop Pitman Arms	Part #
93-98 Grand Cherokee w/Power Steering, 4"-8" of Lift	18006.54
84-01 Cherokee w/Power Steering, 4"-8" of Lift	18006.54

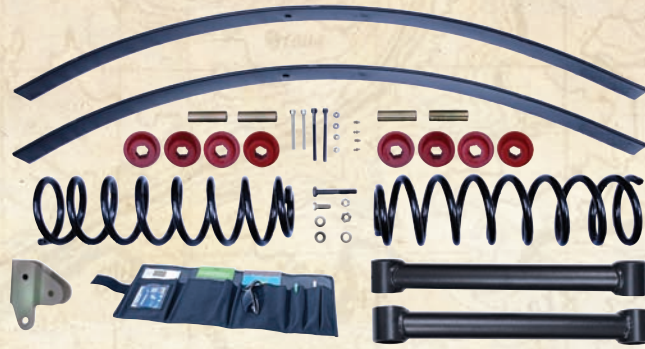
WARNING: WARNING: Look at the beginning of the ORV™ section for important safety information.

Cherokee 84-12

1984-01 CHEROKEE

84-01 Jeep Cherokee XJ 3" Lift

- Custom designed add-a-leaf springs with polyurethane bushings for a soft ride & easy installation.
- Tough powder coat finished [E-coated pre finish] U-bolts.
- Kit also includes 2 lower links and front track bar bracket.
ORV™ kits with shocks include an Off Road Organizer!



18401.70 Lift Kit, 3" 1984-01 Cherokee

84-01 Jeep® Cherokee XJ, 4WD/2WD	Kit w/o Shocks	Kit w/ Shocks	Max Tire Size- HxWxD	Max Wheel Offset	Estimated Install Time
3" Lift, 84-01 Jeep® Cherokee, 2WD/4WD**	18401.70	18415.70	31"x10.5"x15"	3.75"	6 Hours

**Add-A-Leaf Rear
18401.70 Kit includes: [2] front coil springs, [2] rear add-a-leaf springs

WARNING: WARNING: Look at the beginning of the ORV™ section for important safety information.

1993-98 GRAND CHEROKEE

93-98 Jeep Grand Cherokee 3" Coil Spring Lifts

- Custom designed coil springs for a soft ride, great on road performance.
- Kit includes standard links with urethane bushings for a great ride and long life.
- Also includes front track bar bracket.
- ORV™ kits with shocks include an Off Road Organizer!



18401.75 Lift Kit, 3" 1993-98 Grand Cherokee

93-98 Jeep® Grand Cherokee ZJ, 4WD/2WD	Kit w/o Shocks	Kit w/ Shocks	Max Tire Size- HxWxD	Max Wheel Offset	Estimated Install Time
3" Lift, 93-98 Jeep® Grand Cherokee, 2WD/4WD	18401.75	18415.75	31"x10.5"x15"	3.75"	8 Hours

18401.75 Kit includes: (4) coil springs, (4) lower links, front track bar bracket, hardware kit
WARNING: WARNING: Look at the beginning of the ORV™ section for important safety information.

1999-04 GRAND CHEROKEE

99-04 Jeep Grand Cherokee 2" Poly Spacer Lift

- Custom Spacer kit that gives you a more aggressive look while providing great on road performance.
- Kit includes 4 polyurethane spacers and all necessary installation hardware.
- ORV™ kits with shocks include an Off Road Organizer!
- Bump stops are not required on this kit.



18415.80

99-04 Jeep® Grand Cherokee WJ, 4WD/2WD	Kit w/o Shocks	Kit w/ Shocks	Max Tire Size- HxWxD	Max Wheel Offset	Estimated Install Time
2" Poly Spacer Lift, 99-04 Jeep® Grand Cherokee, 2WD/4WD	18401.80	18415.80	31"x10.5"x16"	3.75"	4 Hours

18401.80 Kit includes: (2) front coil spacers, (2) rear coil spacers
WARNING: WARNING: Look at the beginning of the ORV™ section for important safety information.

Cherokee 84-12



POLYURETHANE/SUSPENSION ACCESSORIES



COMPLETE POLYURETHANE KIT

(includes all major suspension points for steel bodied models. Not for fiberglass bodies):

Description	Poly #	Replaced by Omix #
84-01 XJ Cherokee	1-2004	18350.04

REAR SPRING & SHACKLE BUSHING KITS:

Description	Poly #	Replaced by Omix #
84-01 XJ Cherokee	1-1007	18365.02

SHACKLE BUSHING KITS:

Description	Poly #	Replaced by Omix #
84-01 XJ Cherokee	1-804	18366.04



SWAYBAR BUSHING KITS:

Description	Poly #	Replaced by Omix #
1984-01 XJ Cherokee, 1993-98 ZJ Grand Cherokee 24mm, FRONT	1-1103	18367.03
1984-01 XJ Cherokee, 1993-98 ZJ Grand Cherokee 25mm, FRONT	1-1104	18367.04
1984-01 XJ Cherokee, 1993-98 ZJ Grand Cherokee 28mm, FRONT	1-1105	18367.05
1984-01 XJ Cherokee, 1993-98 ZJ Grand Cherokee 23mm, FRONT	1-1106	18367.06
1984-01 XJ Cherokee, 1993-98 ZJ Grand Cherokee 1", FRONT	1-1108	18367.08
1984-01 XJ Cherokee, 1993-98 ZJ Grand Cherokee 7/8", FRONT	1-1115	18367.13
1984-01 XJ Cherokee, 1993-98 ZJ Grand Cherokee 15/16", FRONT	1-1116	18367.14
1984-01 XJ Cherokee, 1993-98 ZJ Grand Cherokee 1-1/8", FRONT	1-1117	18367.15
1984-01 XJ Cherokee, 5/8" BAR, REAR	1-1118	18367.16
1993-98 ZJ Grand Cherokee, REAR	1-1109	18367.09

MISC. POLYURETHANE ITEMS:

Description	Poly #	Replaced by Omix #
87-01 XJ Cherokee 4.0L Engine Mount Pair	1-502	18390.02
Jack Handle Grabber (Anti-Rattle), All Hi Lift Style Jacks NEW	19-1404	18369.50
1984-01 Cherokee, Sway Bar Disconnect Eye Bushing NEW	-	18366.80
Shock Bushing, Rubber, Universal NEW Application, 1-7/16 Long, 5/8 Id, 1-In OD	-	18367.20

POLYURETHANE/STAINLESS BRAKE LINES

TRACK ARM BUSHING KITS:

Description	Poly #	Replaced by Omix #
1984-01 XJ Cherokee, Front	1-1203	18368.02
1993-98 ZJ Grand Cherokee, Front	1-1203	18368.02
1993-98 ZJ Grand Cherokee, Rear	1-1204	18368.03

CONTROL ARM BUSHING KITS:

Description	Poly #	Replaced by Omix #
1984-01 XJ Cherokee, Front	1-202	18368.01
1993-98 ZJ Grand Cherokee, Front	1-203	18368.02
1993-98 ZJ Grand Cherokee, Rear	1-301	18362.04

FRONT & REAR BRAIDED STAINLESS STEEL BRAKE HOSES:

(PROVIDES UP TO 4" EXTRA LENGTH. ESSENTIAL FOR LIFTED VEHICLES)



Description	Part #
1992-01 Cherokee 4WD Kit [3-Piece Front & Rear]	16735.09
1993-98 Grand Cherokee w/ Rear Drum Kit [3 Line]	16735.10
1993-98 Grand Cherokee w/ Rear Disc Kit [5 Line]	16735.11



ORV™ SUSPENSION SYSTEMS BY RUGGED RIDGE® LIMITED LIFETIME WARRANTY

Your Omix-Ada® / Rugged Ridge® product is covered by the Lifetime Limited Warranty explained below that gives you specific legal rights. This limited warranty is the only warranty Omix-Ada® / Rugged Ridge® / ORV™ makes in connection with your product purchase. Parts sold by Omix-Ada® or Rugged Ridge® but supplied by other vendors are exclusively warranted by the vendor supplying the part. Omix-Ada® neither assumes nor authorizes any vendor, retailer or other person or entity to assume for it any other obligation or liability in connection with this product or Limited Warranty.

What is covered? Subject to the terms, exclusions and limitations herein and with respect only to products first sold in the United States, Omix-Ada® warrants to the initial retail purchaser only that its Rugged Ridge® suspension kits, and ORV™ shocks and stabilizers shall be free of defects in material and workmanship for so long as the initial retail purchaser owns the vehicle on which these products were originally installed. All other express or implied warranties are hereby disclaimed. Your warrantor for these parts is Omix-Ada®, Inc., 460 Horizon Dr., Suite 400 Suwanee, GA 30024. Omix-Ada® reserves the rights to: [a.] require proof of purchase as a condition of this Limited Warranty, [b.] make future revisions to its Limited Warranty without prior notice.

What is not covered? Your Omix-Ada® / Rugged Ridge® / ORV™ Limited Warranty does not cover any Rugged Ridge® / ORV™ suspension systems that are used or combined with non-ORV™ suspension components. Furthermore, ORV™ suspensions not installed with ORV™ or other recommended shock absorbers may void the Limited Warranty. Products that wear out or fail due to the use of larger tires or wheels are not covered by this Limited Warranty. Your Omix-Ada® Limited Warranty further does not cover products or parts supplied to Omix-Ada® by outside vendors or products, parts or vehicles Omix-Ada® determines to have been damaged by or subjected to:

- Installation damage, alteration, modification or failure to maintain.
- Normal wear and tear [bushings, tie-rod ends, etc.]. Scratches or defects in product finishes [powder coating, plating, etc.] or damage due to shipping.
- Damage arising or related to non- Omix-Ada® / Rugged Ridge® / ORV™, including but not limited to any vehicle's electronic stability system, related components or other vehicle systems.
- Racing or other vehicle competitions or contests. Accidents, impact by rocks, trees, obstacles or other aspects of the environment.
- Theft, vandalism or other intentional damage.
- Products used in application other than those recommended in the current / Rugged Ridge® / ORV™ catalog or the instructions accompanying your Rugged Ridge® /ORV™ product.

Remedy Limited to Repair / Replacement. The exclusive remedy provided hereunder shall, upon Omix-Ada® inspection and at Omix-Ada's® option, be either repair or replacement of product or parts covered under this Limited Warranty. Customers requesting warranty consideration on Omix-Ada® branded parts (including Rugged Ridge® and ORV™) should first contact the independent distributor from whom you purchased your part to obtain a Returned Goods Authorization number. All removal, shipping and installation costs are customer's responsibility. Customers requesting warranty consideration on non-Omix-Ada® branded parts should refer to the manufacturers' Limited Warranty and contact them directly. If a replacement part is needed before the Omix-Ada® part can be returned, you must first purchase the replacement part. Then, if Omix-Ada® deems the part warrantable, you will be credited the purchase price.

Other Limitations - Exclusion of Damages - Your Rights Under State Law

- In consideration of the purchase price paid, neither Omix-Ada® nor any independent Omix-Ada® distributor/licensee are responsible for any time loss, rental costs, or for any incidental, consequential, punitive or other damages you may have or incur in connection with any part or product purchased. Your exclusive remedy hereunder for covered parts is repair/replacement as described above.
- This Limited Warranty gives you specific rights. You may also have other rights that vary from state to state. For example, while all implied warranties are disclaimed herein, any implied warranty required by law is limited to the terms of Limited Warranty described above. Some states do not allow limitations of how long an implied warranty lasts and /or do not allow the exclusion or limitation of incidental or consequential damages, so the limitations and exclusions herein may not apply to you.



DRIVETRAIN ENGINEERING PERFECTED

Are you looking for an axle or ring and pinion rugged enough to match your off the beaten path sense of adventure? Alloy USA® axle shafts and Precision Gear® ring & pinions have been propelling muscle cars, trucks and four wheel drive vehicles down highways, drag strips, back roads and over the world's roughest terrain for nearly a decade. With the recent asset and intellectual property purchase of Alloy USA® and Precision Gear® by Ultra Axle LLC, an affiliate of Omix-Ada® Inc., these two brands are now backed by an industry leading, financially strong company that will be there for you in the long haul. As a member of the Omix-Ada® group of companies Alloy USA® and Precision Gear® will provide the service and support you demand!



The dedicated team of Alloy USA® and Precision Gear® engineers have developed, tested, raced and trail ridden each of our products until they were perfected. We marry the mechanics of engineering with the art of manufacturing to produce the finest in drivetrain solutions. High tensile strength 4340 Chromoly is heat-treated, tempered and induction hardened to produce these heavy-duty axles that are up to 40% stronger than stock. We use the latest splining technology to produce splines that are stronger than traditional cut splines. The shafts are then precision CNC machined and magnaflux inspected for cracks before receiving the Alloy USA® logo and a slick black anodized or natural finish.

Why have we put so much time and energy into developing our Axle Shafts and Ring & Pinions? Because horsepower is useless if you can't get it to the ground. We take pride in engineering solutions and prove it by backing each product with an industry leading warranty. Each axle is covered by our exclusive 10-year limited warranty and each ring and pinion is covered by a 5-year limited warranty so you can drive with confidence!

THE BEST WARRANTY IN THE BUSINESS

Alloy USA®/Precision Gear® Limited Warranty

Your Alloy USA® or Precision Gear® product is covered by the Limited Warranty explained below that gives you specific legal rights. This limited warranty is the only warranty Ultra Axle® LLC [the distributor/warrantor of these products] makes in connection with your purchase. Ultra Axle® LLC neither assumes nor authorizes any vendor, retailer or other person or entity to assume for it any other obligation or liability in connection with its products or Limited Warranty.

What is covered? Subject to the terms, exclusions and limitations herein and with respect only to products first sold in the United States, Ultra Axle® LLC warrants to the initial retail purchaser only that products sold under its Alloy USA® and Precision Gear® trademarks including Axle Shafts, Ring and Pinions, Installation Kits, Jeep® Overhaul Kits, Alloy USA® X Joints and Differential Covers shall be free of defects in material and workmanship for the Limited Warranty term/duration described below. This Limited Warranty shall be measured from the date of initial retail purchase, extends only to the initial retail purchaser and is not transferable. All other express or implied warranties are hereby disclaimed. Your warrantor for these parts is Ultra Axle® LLC, 460 Horizon Dr., Suite 400 Suwanee, GA 30024 (770-614-6101). Ultra Axle® reserves the right to: [a.] require proof of purchase as a condition of this Limited Warranty, [b.] make future revisions to its Limited Warranty without prior notice.

Duration of Limited Warranty by Product Line

Alloy USA®, front and rear axles- **10 Year Limited Warranty**

Precision Gear® and Alloy USA® Ring and Pinions- **5 Year Limited Warranty**

Jeep® Overhaul kits, Alloy USA® X Joints, Tube Seals, Differential Covers, Differential Cable Lock Kits, Wheel Spacers, Transfer Chain Kits, Yoke Conversion Kits & Hub Conversion Components - **3 Year Limited Warranty**

What is not covered: Your Alloy USA®, Precision Gear® Limited Warranty does not cover damage or claims to any component, vehicle or person other than Alloy USA® or Precision Gear® parts purchased by the initial retail purchaser. Your Alloy USA®, Precision Gear® Limited Warranty does not cover damage or claims to any component, vehicle or person Ultra Axle® LLC determines to have been damaged by or subjected to:

- Installation damage, alteration, modification, misuse or failure to maintain.
- Products used in application other than those recommended in the current Alloy USA®/Precision Gear® catalog or the instructions accompanying your Alloy USA® Precision Gear® product.
- Normal wear and tear/product life deterioration, scratches or defects in product finishes [powder coating, plating, etc.] or damage due to shipping.
- Damage arising or related to non- Ultra Axle® LLC products including but not limited to any vehicle's electronic stability system, related components or other vehicle systems.
- Accidents, impact by rocks, trees, obstacles or other aspects of the use environment.
- Theft, vandalism or other intentional damage.

Remedy Limited to Repair / Replacement. The exclusive remedy provided hereunder shall, upon Ultra Axle® LLC inspection and at Ultra Axle® LLC option, be either repair or replacement of the Ultra Axle® LLC parts covered under this Limited Warranty. Customers requesting warranty consideration should first contact the independent distributor selling your part to obtain a Returned Goods Authorization number. All removal, shipping and installation costs are customer's responsibility. If a replacement part is needed before the Ultra Axle® LLC part can be returned, you must first purchase the replacement part. Then, if Ultra Axle® LLC determines the part warrantable, you will be credited the purchase price of that part.

Other Limitations - Exclusion of Damages - Your Rights Under State Law

- In consideration of the purchase price paid, neither Ultra Axle® LLC nor any independent distributor are responsible for any loss of use or time, rental costs, or for any incidental, consequential, punitive or other damages you may have or incur in connection with your vehicle or any Ultra Axle® LLC product. Your exclusive remedy for Ultra Axle® LLC parts covered hereunder is repair/replacement as described above.
- This Limited Warranty gives you specific rights. You may also have other rights that vary from state to state. For example, while all implied warranties are disclaimed herein, any implied warranty required by law is limited to the duration and other enforceable terms of Limited Warranty described above. Some states do not allow limitations of how long an implied warranty lasts and /or do not allow the exclusion or limitation of incidental or consequential damages, so the limitations and exclusions herein may not apply to you.

© Ultra Axle® LLC Ultra Axle LLC. 1.3.2010. All Rights Reserved. Jeep® is a registered trademark of Chrysler LLC. Ultra Axle® LLC is an independent aftermarket vendor not affiliated with any vehicle manufacturer. Pro Gear® and Ultralite Gears and Differentials® are additional trademarks of Ultra Axle® LLC.



Chrysler®, Chevrolet®, Dodge®, GM®, Ford®, Jeep®, International® & other names used here are trademarks of their respective owners and are used within this publication for identification purposes only. Alloy USA® is not affiliated with these companies. The information in this catalog is believed to be correct at the time of publishing. The publisher is not responsible for any losses, direct or indirect, that are the result of any information within this publication. Alloy USA® and Precision Gear® and their corresponding logos are trademarks of Ultra Axle®, LLC. OMIX-ADA® and its corresponding logo are registered trademarks of OMIX-ADA®, Inc.

®Registered 2010, Ultra Axle®, LLC. all rights reserved.

Alloy USA® Front Axles & Front/Rear Shafts



FRONT AXLE KITS

High tensile strength 4340 Chromoly is heat-treated, tempered and induction hardened to produce these heavy-duty axles that are up to 40% stronger than stock 1040 axles. Each axle shaft is backed by Alloy USA®'s exclusive ten-year warranty! We use the latest splining technology to produce splines that are stronger than traditional cut splines. The shafts are then precision CNC machined and magnaflux inspected for cracks before receiving a slick black anodized finish. Our front axle shaft kits include everything you need to complete the job: both passenger and drive side inner and outer axle shafts, seals, U-joints and clips.

JEEP® COMPLETE INNERS/OUTERS WITH U-JOINTS & CLIPS

Cherokee 84-12

Application	Part #	Inner	Outer	Ring
Jeep Cherokee [XJ] 84-91, Dana 30 27-Spline Kit [Disconnect Eliminator]	12145	27	27	D30
Jeep Cherokee [XJ] 84-91, Dana 30 30-Spline Kit	12131	30	27	D30
Jeep Cherokee [XJ] 84-91, Dana 30 30-Spline Kit w/ARB Locker , 3.73 & Up	12131-ARB	30	27	D30
Jeep Cherokee [XJ] 84-91, Dana 30 Grande 30/30-Spline Kit [30-Spline Inners & Outers]	12231	30	30	D30
Jeep Cherokee [XJ] 84-91, Dana 30 Grande 30/30-Spline Kit w/ ARB Locker [30-Spline Inners & Outers] ² , 3.73 & Up	12231-ARB	30	30	D30
Jeep Cherokee [XJ] 92-01, Dana 30 27-Spline Kit	12148	27	27	D30
Jeep Cherokee [XJ] 92-01, Dana 30 Grande 30-Spline Kit ³	12132	30	27	D30
Jeep Cherokee [XJ] 92-01, Dana 30 Grande 30-Spline Kit w/ ARB Locker, 3.73 & Up	12132-ARB	30	27	D30
Jeep Cherokee [XJ] 92-01, Dana 30 Grande 30/30-Spline Kit [30-Spline Inners & Outers] ^{1,2,3}	12232	30	30	D30
Jeep Cherokee [XJ] 92-01, Dana 30 Grande 30/30-Spline Kit w/ ARB Locker [30-Spline Inners & Outers] ^{1,2} , 3.73 & Up	12232-ARB	30	30	D30
Jeep Wagoneer [SJ] 74-79, Dana 44 30-Spline Kit NEW	12171	30	19	D44
Jeep Wagoneer [SJ] 80-92, Dana 44 30-Spline Kit NEW	12174	30	19	D44

¹ NOTE: This kit includes upgraded 30 spline bearing hub units.
² NOTE: When converting to 30 spline outer axles, 1999 and older models must use the 2000-06 Wrangler rotor [Omix 16702.05].
³ NOTE: Upgrade to 30 spline locker required.

GRANDE OUTER STUB UPGRADE

Grande 30 spline outer stub upgrade replaces factory 27 spline outer stub axles to 30 spline. Kit includes:
 2 - 30 Spline Chromoly Axle Stub Shafts
 2 - 30 Spline Unit Bearings
 2 - Alloy X-Joints



Application	Part #
Jeep Cherokee [XJ] 84-01, 30-Spline Outer/Unit Bearing Upgrade Kit	12168

NOTE: When converting to 30 spline outer axles, 1999 and older models must use the 2000-06 Wrangler brake rotor [Omix 16702.05].

ALLOY USA® DANA 30 MANUAL LOCKING HUB CONVERSION KITS

The Alloy USA® Hub Conversion Kit is designed to upgrade and replace the non-serviceable wheel hubs found on 1984-01 Cherokees. Now you can lock and unlock your front hubs to reduce driveline strain and improve fuel economy! The Deluxe Hub Conversion kit includes a set of Rugged Ridge® Manual Locking Hubs, high tensile strength 27 spline inner and outer Alloy USA® 4340 Chromoly Axle Shafts, 1/2 ton capacity aluminum internal mounting hubs, Alloy USA® X-Joints, machined front brake rotors, bearings, seals and hardware.... everything you need to upgrade your rig and prepare it for the trail. Maximum recommended tire size is 33".

Alloy USA® Grande Hub Conversion Kits Feature:

- Better fuel economy by freewheeling in 2WD mode. Decreases tire wear since unlocked manual hubs rotate more freely.
- Includes beefy Corrosion resistant die cast aluminum Rugged Ridge® Manual Locking Hubs.



Deluxe Hub Conversion with Alloy USA® Inner & Outer Axles	Part #
84-01 XJ, D30 Manual Locking Hub Deluxe Conversion Kit, Includes Alloy USA® Inner Axle Shafts NEW	12198
Standard Hub Conversion without Inner Shafts	Part #
84-91 Cherokee [XJ], D30 Manual Locking Hub Conversion Kit NEW	12194
92-01 Cherokee [XJ], D30 Manual Locking Hub Conversion Kit NEW	12195
Service Rotor Brake For Front Hub Conversion	Part #
84-01 Cherokee [XJ] NEW	16702.13



PERFORMANCE REAR AXLE KITS FOR JEEP®

High tensile strength 4140 Chromoly is heat-treated, tempered and induction hardened to produce these heavy-duty axles that are up to 35% stronger than stock 1040 axles. Alloy USA® uses the latest cold rolled splining technology, to produce splines that are stronger than traditional cut splines. Our shafts are covered by an exclusive 10-year warranty! Rear axle shaft kits include everything you need for your installation: both passenger and drive side shafts, seals, bearings and wheel studs. Upgraded spline counts for Jeep® applications: Dana 35 spline upgrades from 27 splines to 30 splines. Dana 44 spline upgrades from 30 splines to 33 and 35 splines.



Jeep® 2 Axles - Bearings - Seals - Wheel Studs

	Part #	Spline	Ring
Jeep Cherokee [XJ] 84-89, Dana 35 Grande 30-Spline Kit, [Non C-clip] ¹	12133	30	D35
Jeep Cherokee [XJ] 84-89, Dana 35 Grande 30-Spline Kit With ARB Locker [Non C-clip], 3.54 & Up	12133-ARB	30	D35
Jeep Cherokee [XJ] 84-89, Dana 35 Grande 30-Spline Kit With Detroit Locker [Non C-clip], 3.54 & Up	12133-DET	30	D35
Jeep Cherokee [XJ] 90-01, Dana 35 27-Spline Kit, [C-clip, Without ABS]	12200	27	D35
Jeep Cherokee [XJ] 90-01, Dana 35 Grande 30-Spline Kit, [C-clip, Without ABS] ¹	12134	30	D35
Jeep Cherokee [XJ] 90-01, Dana 35 Grande 30-Spline Kit With ARB Locker, [C-clip, Without ABS], 3.54 & Up	12134-ARB	30	D35
Jeep Cherokee [XJ] 90-01, Dana 35 Grande 30-Spline Kit With Detroit Locker, [C-clip, Without ABS], 3.54 & Up	12134-DET	30	D35
Jeep Grand Cherokee [ZJ] 94-98, Dana 35 27-Spline Kit NEW	12201	27	D35
Jeep Grand Cherokee [ZJ] 94-98, Dana 44 30-Spline Kit	12202	30	D44

¹ NOTE: Upgrade to 30 spline locker required.

Rule #1: If it broke it needed to be upgraded. For less than the cost of an original replacement axle shaft you can upgrade to an Alloy USA® performance shaft. Each axle is heat-treated, tempered and induction hardened to have twice the tensile strength than stock and is up to 35% stronger. We use the latest splining technology, to produce splines that are stronger than traditional cut splines.

PERFORMANCE REAR AXLE SHAFTS



**Jeep® Axle Shafts, Sold Individually.
Wheel Bearings, Seals, & Wheels Studs Available Separately**

	Part #	Hollander	Spline	Length	Side	Ring
Jeep Cherokee [XJ] 84-89, Dana 35, RH, 27-Spline w/o ABS	21136	1799R	27	28.94"	RH	D35
Jeep Cherokee [XJ] 84-89, Dana 35, LH, 27-Spline w/o ABS	21137	1799L	27	30.35"	LH	D35
Jeep Cherokee [XJ] 90-91, Dana 35, RH, 27-Spline w/ ABS	21138	NA	27	29.04"	RH	D35
Jeep Cherokee [XJ] 90-91, Dana 35, LH, 27-Spline w/ ABS	21139	NA	27	30.54"	LH	D35
Jeep Cherokee [XJ] 92-01, Dana 35, RH, 27-Spline w/o ABS	21120	1797R	27	29-1/16"	RH	D35
Jeep Cherokee [XJ] 92-01, Dana 35, LH, 27-Spline w/o ABS	21121	1797L	27	30-9/16"	LH	D35
Jeep Cherokee [XJ] 92-01 Dana 35, RH, 27-Spline w/ ABS & Drum	21140	1832R	27	29"	RH	D35
Jeep Cherokee [XJ] 92-01 Dana 35, LH, 27-Spline w/ ABS & Drum	21141	1832L	27	30-5/8"	LH	D35
Jeep Cherokee [XJ] 91-96, LH/RH, Chrysler 8.25", 27-Spline	21116	1831	27	29-3/4"	LH/RH	8.25"
Jeep Cherokee [XJ] 97-01, LH/RH, Chrysler 8.25", 29-Spline	21118	2235	29	29-3/4"	LH/RH	8.25"
Jeep Grand Cherokee [ZJ] 94-98, Dana 35, RH, 27-Spline, w/ ABS & Rear Disc Brakes NEW	21122	2081R	27	29-1/8"	RH	D35
Jeep Grand Cherokee [ZJ] 94-98, Dana 35, LH, 27-Spline, w/ ABS & Rear Disc Brakes NEW	21123	2081L	27	30-9/16"	LH	D35
Jeep Grand Cherokee [ZJ] 94-98, Dana 44, RH, 30-Spline, w/ ABS & Rear Disc Brakes NEW	21124	2232R	30	29-1/4"	RH	D44
Jeep Grand Cherokee [ZJ] 94-98, Dana 44, LH, 30-Spline, w/ ABS & Rear Disc Brakes NEW	21125	2232L	30	30-1/4"	LH	D44
Jeep Grand Cherokee [WJ] 99-04, Dana 35, RH, 27-Spline NEW	21126	2461	27	30-1/4"	RH	D35
Jeep Grand Cherokee [WJ] 99-04, Dana 35, LH, 27-Spline NEW	21127	2462	27	31-7/8"	LH	D35
Jeep Grand Cherokee [WJ] 99-04, Dana 44, RH, 30-Spline NEW	21128	2703R	30	29-3/8"	RH	D44
Jeep Grand Cherokee [WJ] 99-04, Dana 44, LH, 30-Spline NEW	21129	2703L	30	32-3/8"	LH	D44

Alloy USA®

JEEP® RING & PINIONS



These affordable high strength gear sets come in all the popular ratios to satisfy everyone's gearing needs. Oversized tires require higher ring & pinion ratios to restore performance. Made from high quality 8620 forgings and Gleason gear cutting technology, these gears are made to last. Complete installation kits are available separately to complete the job. Exclusive 5-year warranty. Available in 3.73, 4.10, 4.56, 4.88 and 5.13 ratios.

Application	Ratio	Part #
FRONT		
Cherokee [XJ] 84-91, Dana 30 Reverse, 3.73 Ratio	3.73	D30373R
Cherokee [XJ] 84-91, Dana 30 Reverse, 4.10 Ratio	4.10	D30410R
Cherokee [XJ] 84-91, Dana 30 Reverse, 4.56 Ratio	4.56	D30456R
Cherokee [XJ] 84-91, Dana 30 Reverse, 4.88 Ratio	4.88	D30488R
Cherokee [XJ] 92-01, Dana 30, 4.56 Ratio (Short)	4.56	D30456TJ
Cherokee [XJ] 92-01, Dana 30 4.88 Ratio (Short)	4.88	D30488TJ
REAR		
Cherokee [XJ] 84-01, Dana 35 Rear, 3.73 Ratio	3.73	D35373
Cherokee [XJ] 84-01, Dana 35 Rear, 4.10 Ratio	4.10	D35410
Cherokee [XJ] 84-01, Dana 35 Rear, 4.56 Ratio	4.56	D35456
Cherokee [XJ] 84-01, Dana 35, 4.88 Ratio	4.88	D35488
Cherokee [XJ] 91-01, Chrysler 8.25", 3.55 Ratio NEW	3.55	C83355

RING & PINION MASTER INSTALLATION & OVERHAUL KITS FOR JEEP®

These great kits offer all the components you will need to complete your differential rebuild or ring & pinion installation. Complete with bearings, pinion seals, pinion shims, crush sleeve, pinion nut, ring gear bolts and marking compound.



Application	Part #
Cherokee [XJ] 84-91, Dana 30 Front	352032
Cherokee [XJ] 84-01, Dana 35 Rear	352049
Cherokee [XJ] 92-01, Dana 30 Front	352031
Grand Cherokee [WJ] 99-04, Dana 35, Rear	352061
Grand Cherokee [WJ] 99-00, Before 3/29/00, Dana 44, Rear	352062
Grand Cherokee [WJ] 00-04, After 3/29/00, Dana 44, Rear	352063
Grand Cherokee [XJ] 91-01, Chrysler 8.25, Rear	352064
Grand Cherokee [ZJ] 93-98, Dana 35 Rear	352049
Grand Cherokee [ZJ] 93-98, Dana 30 Front	352031

Cherokee 84-12

WHEEL SPACERS & ADAPTERS

- Moves your wheels out to help fit wider tires-creates extra stability.
- Hub centric design to assure wheel balance.
- Constructed of durable 6061T6 aluminum for long life, extra strength and corrosion resistance.
- Available in 1.25" to 1.5" widths for today's most popular wheel sizes.
- Each pair includes pre-installed grade 8 wheel studs, 10 lug nuts and thread locker.
- Wheel adaptors convert current bolt patterns to alternate bolt patterns for use with different wheels.
- Wheel Spacers and Wheel adaptors are sold in pairs.



Wheel Spacers	Width	Bolt Pattern	Part #
Jeep Cherokee 1984-2001 NEW	1.25"	5 on 4.5"	11301

Wheel Adapters	Width	Conversion	Part #
Cherokee 1984-2001, Pair NEW	1.25"	5 on 4.5" to 5 on 5.5"	11310

HD DIFFERENTIAL COVERS

Indestructible! You won't break these covers, we guarantee it. Made from either 3/8" cast steel or 5/16" stamped steel, painted black inside and out, these heavy-duty covers are designed to protect your differential and all its working parts for as long as you own your vehicle. These indestructible covers have been ".44 caliber tested" - if they can take a bullet at point blank range (don't try this at home!), they can take all that the trail has to offer. Available for most popular Dana differential types and include extra reinforcement protection for the fill plug area. All mounting hardware and instructions are included for ease of installation.

Differential Cover	Cast 3/8" Steel	Stamped 5/16" Steel
HD Dana 30	11206	11200
HD Dana 35	11201	-
HD Dana 44	11202	-



SLOTTED BRAKE ROTORS

Alloy USA® slotted & drilled brake rotors improve braking performance right out of the box. Slotted & drilled for maximum cooling! Slotted rotors improve brake pad bite & reduce brake fade.



Application	Part #
1990-1999 Cherokee (4WD Only), Disc Brake Rotor (Front) NEW	11350
2000-2001 Cherokee, Disc Brake Rotor (Front) NEW	11351
2002-2007 Liberty, Disc Brake Rotor (Rear) NEW	11352

ALLOY USA® FRONT AXLE X-JOINT COLD FORGED · SERVICEABLE

Now a serviceable U-joint for Dana 44 applications is available to you. Replace your 760X U-joint with Alloy USA's new X-joint!



Application	Part #
Heavy Duty Alloy X-joint, Complete U-joint With Bearings (760 Style) Replaces 5-297X/5-760X NEW	11500

YOKE CONVERSION KITS

These great Conversion Kits allow you to convert your old strap style yoke to the newer stronger u-bolt design. Not only it the U-bolt kit stronger, it makes changing out a failed U-joint a painless process. The kit includes a new yoke, pinion nut, pinion spacer, pinion seal, u-joint and u-bolts. Alloy USA uses premium Spicer U-joints in all their yoke kits.

Yoke Conversion Kits - Converts Strap To U-Bolt Design, Includes Spicer U-Joint & U-Bolts

Application	Part #
Cherokee [XJ] 84-01, Dana 30	380001
Cherokee [XJ] 84-95, Dana 35	380002



DIFFERENTIAL CABLE LOCK KITS

The Alloy USA® Differential Cable Lock Kit is a permanent replacement for the failure prone OE vacuum disconnect system. The kit allows you to engage and lock the front axle from inside the cab. A 1inch pull of the cable ensures you will have four wheel drive when you need it for as long as the transfer case is engaged. Backed by a three year warranty.



NEW!

450400

Application

Part #

Shift Fork, Cast Iron, For Use w/ Alloy USA or Posi Lok Differential Cable Lock Kit, Jeep W/ Front Dana 30 Cherokee [XJ] 84-91 NEW	450100
Differential Cable Lock Kit, With Front D30 Axle, Jeep Cherokee [XJ] 1984-1991 NEW	450900
Differential Cable Lock Kit, For 3-In To 6-In Lift, With Front D30 Axle, Jeep Cherokee [XJ] 1984-1991 NEW	450920
Differential Permanent Cable Lock Kit, Jeep w/ Front D30 Cherokee [XJ] 84-91 NEW	451100

TRANSFER CASE CHAIN

If you're servicing your transfer case and your OE chain has more than 60,000 miles on it, it is time for a replacement. Why replace your chain when can upgrade it? Our advanced Round Pin technology allows the chain to double back on itself and offer greater articulation than the standard rocker pin design. We use high tensile strength steel to ensure that your TC chain endures peak loads under heavy operating conditions repeatedly over time. Backed by an industry leading three year warranty.



Transfer Case Chain

Part #

Transfer Case Chain, NP231 and NP233, 1" Width w/ 30 Links, Jeep Cherokee [XJ] 84-01, Grand Cherokee [ZJ] 93-97 NEW	11650
--	-------

NEW!

TRANSFER CASE SLIP YOKE ELIMINATOR KIT

This kit is a MUST if you installed a 2" or taller suspension lift in your 1987-2001 Cherokee (not needed for body lifted Jeeps®). The kit fits all 1988 and up NP 231 transfer cases. A Slip Yoke Eliminator Kit (SYE) will eliminate the need to drop your transfer case in order to avoid drive train vibrations that are caused by taller suspension lift. The purpose of this kit is to replace the slip yoke portion of the NP 231 with a fixed yoke and CV-style drive shaft assembly. This reduces drive shaft angle, improves bearing & U-joint life, reduces driveline vibrations. It also has a shorter and stronger main shaft design with improved oiling. Will not work with cable driven speedometers. Not for use with Rubicon models.

WARNING: OEM slip yokes on 1987-2001 Jeep® Cherokee are not suitable for use with 2" or taller Rugged Ridge™ or other vendors' suspension lifts. Failure of slip yoke may result in damage to transfer case and/or loss of vehicle control. Use of this slip yoke eliminator kit is required for all suspension lifts 2" or taller. See additional product safety information and WARNINGS at back of catalog.



11400 Slip Yoke Eliminator Kit

Transfer Case Slip Yoke Eliminator Kit

Part #

88-01 Cherokee Slip Yoke Eliminator (with NP231 transfer case) * Kit	11400
Pinion Yoke	18676.61
Oil Seal	18676.62
Hardware Kit	18676.64

*CV style drive shaft is required when using this conversion kit.

ALLOY USA® AXLE TUBE SEALS

Keep water, mud and debris from entering your front axle housing. These CNC machined aluminum housings feature two seals to provide double protection from the crud.



NEW!

Application

Part #

1984-01 Cherokee [XJ], 1993-98 Grand Cherokee [ZJ] Dana 30 [1]	11102 (RED) 11103 (BLACK)
1984-01 Cherokee [XJ], 1993-98 Grand Cherokee [ZJ] Dana 30 or 44 front axle [2] NEW	11105 (RED) 11106 (BLACK)
Replacement Inner Seal For 11102 and 11103 NEW	11108
Replacement Inner Seal For 11105 and 11106 NEW	11109

[1] Note: Will not fit Grande 30 spine axles. For 27 Spline applications only.

[2] Note: For use with all grande 30 spline axle upgrades

DETROIT LOCKERS®

Application

Part #

Detroit Locker, Truetrac, Limited Slip Differential, Dana 30 27 Spline 3.07 to 3.54 Gear Ratio, Jeep Cherokee [XJ] 84-01, Grand Cherokee [ZJ] 93-98	912A584
Detroit Locker, Truetrac, Limited Slip Differential, Dana 30 27 Spline 3.73 to 3.54 Gear Ratio, Jeep Cherokee [XJ] 84-01, Grand Cherokee [ZJ] 93-98	912A585
Detroit Locker, Soft Locker, Locking Differential, Dana 30 3.73 to 5.38 Ratio, Jeep Cherokee [XJ] 84-01, Grand Cherokee [ZJ] 93-98, [WJ] 99-02,	162SL60B
Detroit Locker, Truetrac, Limited Slip Differential, Dana 30 3.73 to 5.38 Ratio, Jeep Cherokee [XJ] 84-01, Grand Cherokee [ZJ] 93-98, [WJ] 99-02,	912A314
Detroit Locker, Limited Slip Differential, Dana 35 27 Spline 3.54 to 5.38 Gear Ratio, Jeep Cherokee [XJ] 90-01	162C56A
Detroit Locker, Truetrac, Limited Slip Differential, Dana 35 27 Spline 3.54 to 5.38 Gear Ratio, Jeep Cherokee [XJ] 84-01, Grand Cherokee [ZJ] 93-98, [WJ] 99-04	912A569
Detroit Locker, Limited Slip Differential, Dana 35 30 Spline 3.54 to 5.38, Jeep Cherokee [XJ] 90-01	162C66A
Detroit Locker, Soft Locker, Locking Differential, Dana 44 3.92 to 5.38 Ratio, 30 Spline, Jeep Cherokee [XJ] 84-01, Grand Cherokee [ZJ] 93-98, [WJ] 99-02	187SL16C

ARB® LOCKERS

ARB-RD105



Application

Part #

ARB Air Locker, 1986-04 MJ, ZJ, WJ, SJ Dana 44 30 Spline 3.92 & UP Ratio	ARB-RD06
ARB Air Locker, 1986-04 MJ, ZJ, WJ, SJ Dana 44 30 Spline 3.73 & DOWN Ratio	ARB-RD07
ARB Air Locker, 1984-01 XJ, 1993-98 ZJ, Dana 30 27 Spline 3.73 & UP Ratio	ARB-RD100
ARB Air Locker, 1984-01 XJ, 1993-98 ZJ, Dana 30 27 Spline 3.54 & DOWN Ratio	ARB-RD101
ARB Air Locker, 1984-01 XJ, 1993-98 ZJ Dana 35 W/C-CLIP 27 Spline 2.73-3.31 Ratio	ARB-RD103
ARB Air Locker, 1984-04 XJ, ZJ Dana 35 W/C-CLIP 27 Spline 3.54 & UP Ratio	ARB-RD102
ARB Air Locker, 1991-01 Cherokee, Chrysler 8.25" 29 Spline, All Ratios	ARB-RD93
ARB Air Locker, 99-04 WJ, 02-07 KJ, Super Dana 30, 3.73 and Up Ratio	ARB-RD104
ARB Air Locker, Super Dana 35, C-CLIP, 30 SPL, 3.54 and Up Ratio	ARB-RD105

Cherokee 84-12

RING & PINION

Precision Gear® understands the rigors of racing. Horsepower is useless unless you can get it to the ground. Most companies providing ring and pinions today look for the cheapest source without consideration of quality. They “stand behind” their product until the day you buy it and install it on your car. At Precision Gear® each ring and pinion we sell is backed by an exclusive five year warranty! Our gears are made from high quality 8620 forgings and Gleason gear cutting technology because our gears are made to last!

For additional product listings and more information visit www.precisiongear.com.



Master Installation Kits:

Precision Gear® understands the complexity of rebuilding your differential. To help solve this difficulty and eliminate multiple trips to the parts store we have including everything you need to complete your ring & pinion installation and get you back on the road quick all in one great kit. Master installation kits include:

Install Kit Includes:

- Carrier Bearings
 - Pinion Bearings
 - Pinion Nut
 - Pinion Seal
 - Preload Shims or Crush Collar
 - Pinion Shims
 - Gasket or RTV
 - Marking Compound
 - Differential Shims (where applicable)
 - Locktite
 - Oil Slingers (where applicable)
 - Ring Gear Bolts (where applicable)
- * Ring & Pinions and Installation Kits are sold separately.

Dana 35 Ratio		Part #	Dana 44 Ratio		Part #
3.55		350/355	3.23		440/323
3.73		350/373	3.31		440/331
4.10		350/410	3.42		440/342
4.56		350/456	3.54		440/354
4.88		350/488	3.73		440/373
Master Installation Kit		352049	4.09		440/409
			4.27		440/427
			4.56		440/456
			4.56		440/456TH
			4.88		440/488
			4.88		440/488TH
			5.13		440/513
			Master Installation Kit		352033

Cherokee 84-12

COMMANDER BULL BARS

Commander Bull Bar	Part #
3" Bull Bar 06-09 Commander, Black	82001.17
3" Bull Bar 06-09 Commander, Stainless	82501.17

GRAND CHEROKEE & LIBERTY CATBACK EXHAUST KITS

Grand Cherokee & Liberty Exhaust Kits	Part #
99-04 4.7, 4.0L Grand Cherokee, Catback Exhaust Kit	17606.53
02-06 2.4, 3.7L Liberty, Catback Exhaust Kit	17606.54



FAN PHOTOS

facebook.com/ruggedridge



AJ G. - GA



TAMAR K. - MARTINEZ, GA



FRED P. - GA



DOUG W. - NORTHFIELD, NJ



DUSTIN S. - CEDAR RAPIDS, IA



BRIAN T. - LOGANVILLE, GA



JON & BRANDON - MARTINSVILLE, NJ



EUGENE D.



TOMMY F.



DUSTIN H. - HOUSTON, TX



JONATHAN M.



MARK & TINA H. - ATTICA, IN



NICHOLAS S.



PHIL S. - CASA GRANDE, AZ

Rugged Ridge



PROTECTS YOUR VEHICLE'S INTERIOR FROM
WHATEVER NATURE THROWS AT YOU!

2012 Master Catalog - Part # 12510.01

ALL TERRAIN FLOOR LINERS

FOR JEEP®, TRUCK & SUV

SEE PAGES A14-A16 FOR MORE INFO & APPLICATIONS

CHEVRON SHAPED RAISED
PATTERN CHANNELS
WATER AND DIRT AWAY
FROM SHOES & CLOTHING.

HIGH PERIMETER WALL
PROVIDES MAXIMUM
PROTECTION AND
WATER RETENTION.

SPECIAL RAISED REINFORCED
HEEL AREA ALLOWS EASY
FOOT MOVEMENT WHILE
PROVIDING DURABILITY.

2-3 TIMES THE
THREAD HEIGHT OF
REGULAR VACUUM
FORMED LINERS

EXCLUSIVE SELF SEALING
FLOOR HOOK ATTACHMENT
KEEPS MOISTURE OUT
WHILE SECURING THE LINER.

ROLLED REINFORCED
EDGES PROVIDE ADDED
STRENGTH AND A
FINISHED LOOK



FIND US ON
FACEBOOK

FACEBOOK.COM/RUGGEDRIDGE



OMIX-ADA.COM | RUGGEDRIDGE.COM | OUTLANDAUTOMOTIVE.COM | ALLOYUSA.COM | PRECISIONGEAR.COM
OMIX-ADA, INC. 460 HORIZON DRIVE SUITE 400 SUWANNE, GA 30024 770-614-6101 INFO@OMIX-ADA.COM

Jeep®, Wrangler®, Cherokee®, Grand Cherokee®, JK®, TJ®, YJ®, CJ®, Jeep grille design and other names used in this catalog are registered trademarks of Chrysler LLC. Omix-ADA, Inc.® or its licensees are not affiliated with Chrysler LLC. All parts listed are aftermarket replacement parts. Part numbers, illustrations and images used for reference purpose only. No implication is made that these are original equipment parts, from those sources whose part numbers are used here for reference or that they are approved by those companies. Omix-ADA®, Rugged Ridge®, Outland Automotive®, Alloy USA® and Precision Gear® names and logos are registered trademarks of Omix-ADA, Inc.®